



• Back Road Equipment Slider Rear Rack Installation Instructions CF Moto IBEX 450

Tools Required:

6 mm hex wrench

5 mm hex wrench

torque wrench

¼" drill bit

21/64" drill bit

electric hand drill

marking pen

Torque wrench with 5 & 6 mm
hex bits.

• Kit Contents:

• 1 Slider Plate with cam lever

• 4 - pucks

• 4 - M8 x 30 Button Head Screws

• 4 - 38 mm stainless steel washer

• 2 - M8 x 35 flat head screw

• 2 - M8 x 55 flat head screw

• 2 - 22 x 30 stepped spacer (long)

• 2 - 16 x 15 mm round aluminum spacer (short)

• 2 - 41 x 5 mm round aluminum spacer (very short)

**Do not exceed the OEMs
recommendation for weight on the
rear rack of the motorcycle!!**

To properly locate the top case it will be necessary to install, remove and re-install the BRE Slider Plate, please keep this in mind and read through the instructions completely before starting the work.



Step 1 Using a 5mm hex bit (Allen wrench) remove the four M5 screws holding the plastic cover on. The plastic cover will not be used with the Slider rack.



Step 2 Using a 6mm hex wrench (Allen wrench) remove the two M8 fasteners.



Step 3 Install the two 22 mm stepped spacers in the front pockets as shown. **Note:** Small diameter fits into the pocket.



Step 4 Insert the two 16 x 15 mm spacers into the rear pockets as shown.



Step 5 Stack the 41 x 5 mm aluminum spacers on top of the 16 x 15 mm aluminum spacers. **Note:** Make sure the uncoated side on the 41mm spacer is facing upward as shown.



Step 6 Place the Slider plate on top of the OEM rack and insert the two long M8 x 55 flat head screws through the plate and the spacers at the front two mounting holes. Insert the two short M8 x 35 screws at the rear mounting holes. Using your fingers thread the screws 3-4 turns before using a 6mm hex wrench to tighten. Final torque will be 26 Nm (19ftlb). **Note:** Apply blue 242 Loctite or equivalent to threads when installing the screws for the final time at **Step 24**.



Step 7 Use a M6 hex wrench and torque wrench to torque the four M8 screws to 26 Nm (19ftlb). **Note:** if you will be removing the plate for case drilling in **Step 13** do not torque the screws at this time. Final torque will be done in **Step 26**.



Step 8 Install one of the black plastic pucks into the key hole with the cam lever. Lock the puck into place with the cam lever. This will be referred to as the “Master Puck”

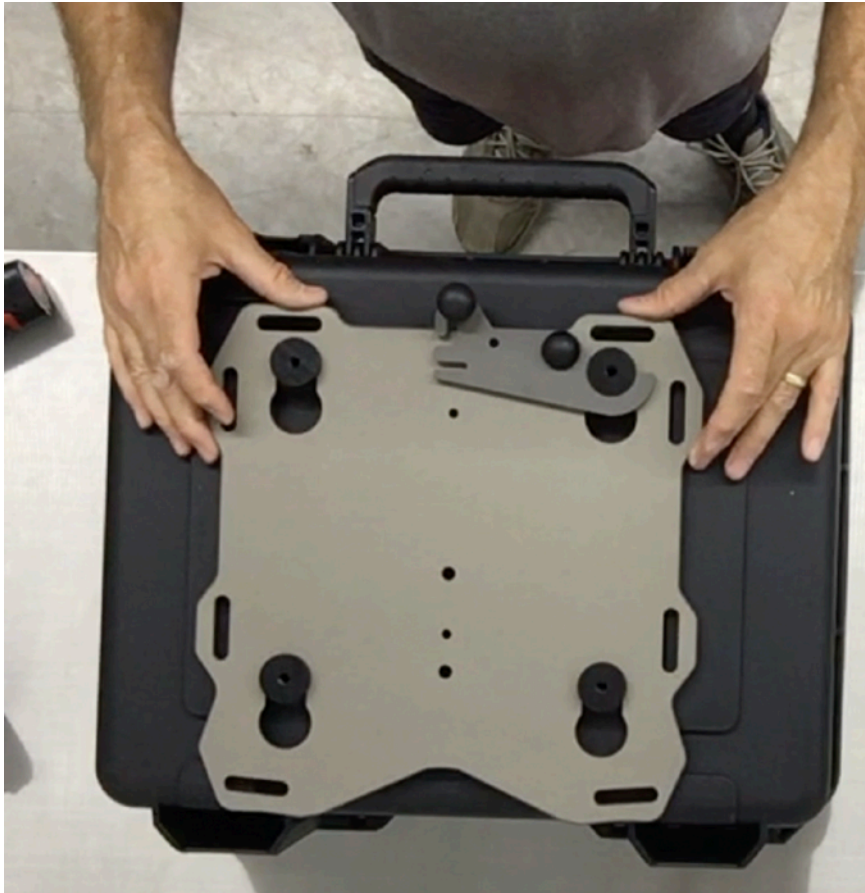
Note: Remove the large washer and screw from the puck before putting into the plate. The screws and washers are installed into the pucks for shipment as part of our QA process.



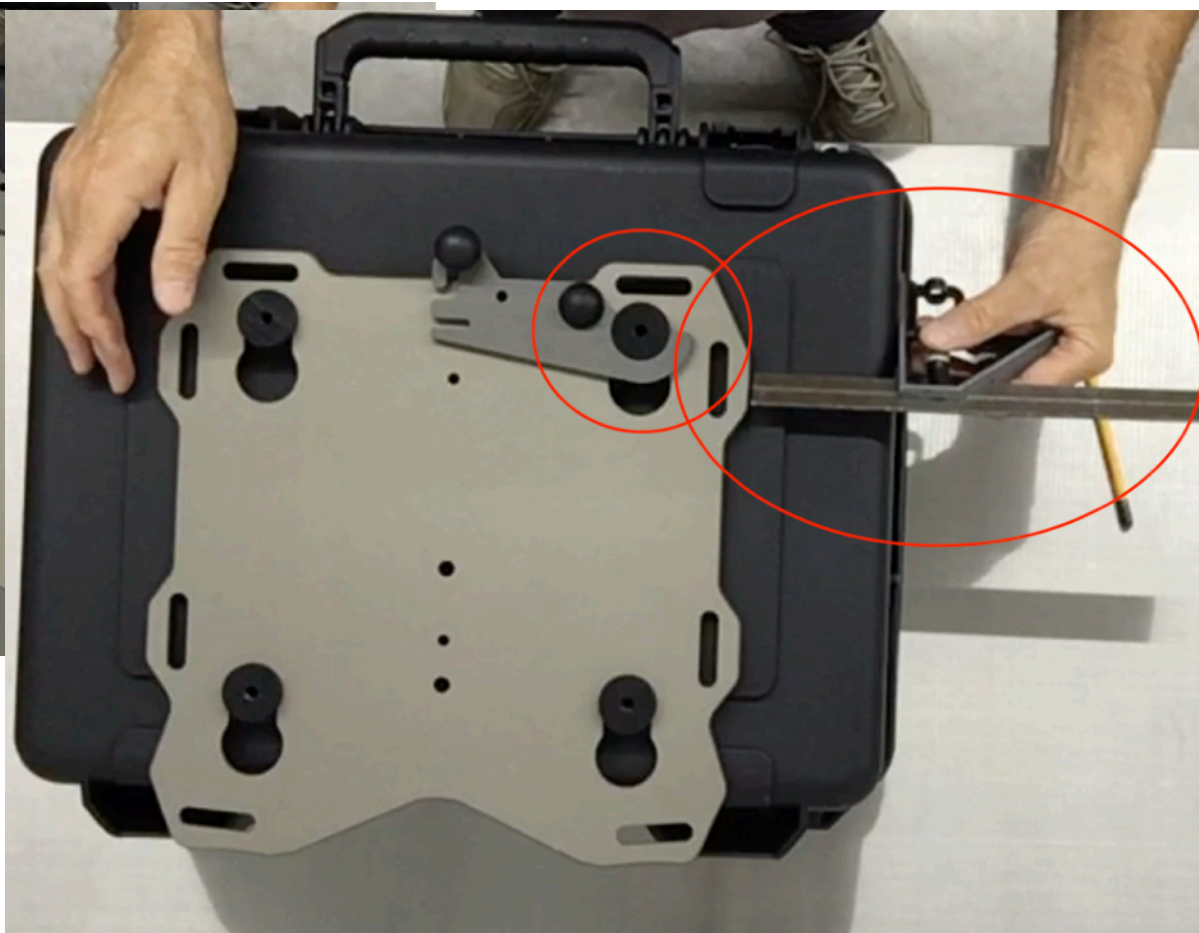
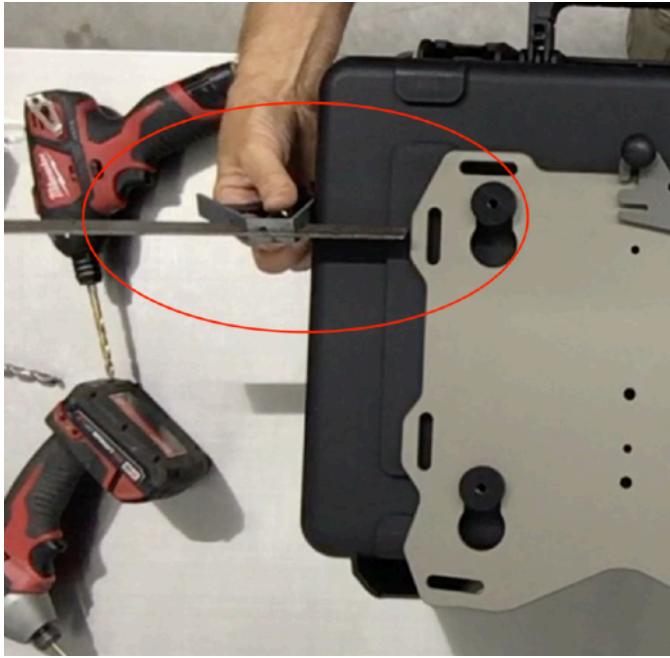
Step 9 Insert the 3 remaining pucks into the keyholes in the plate.



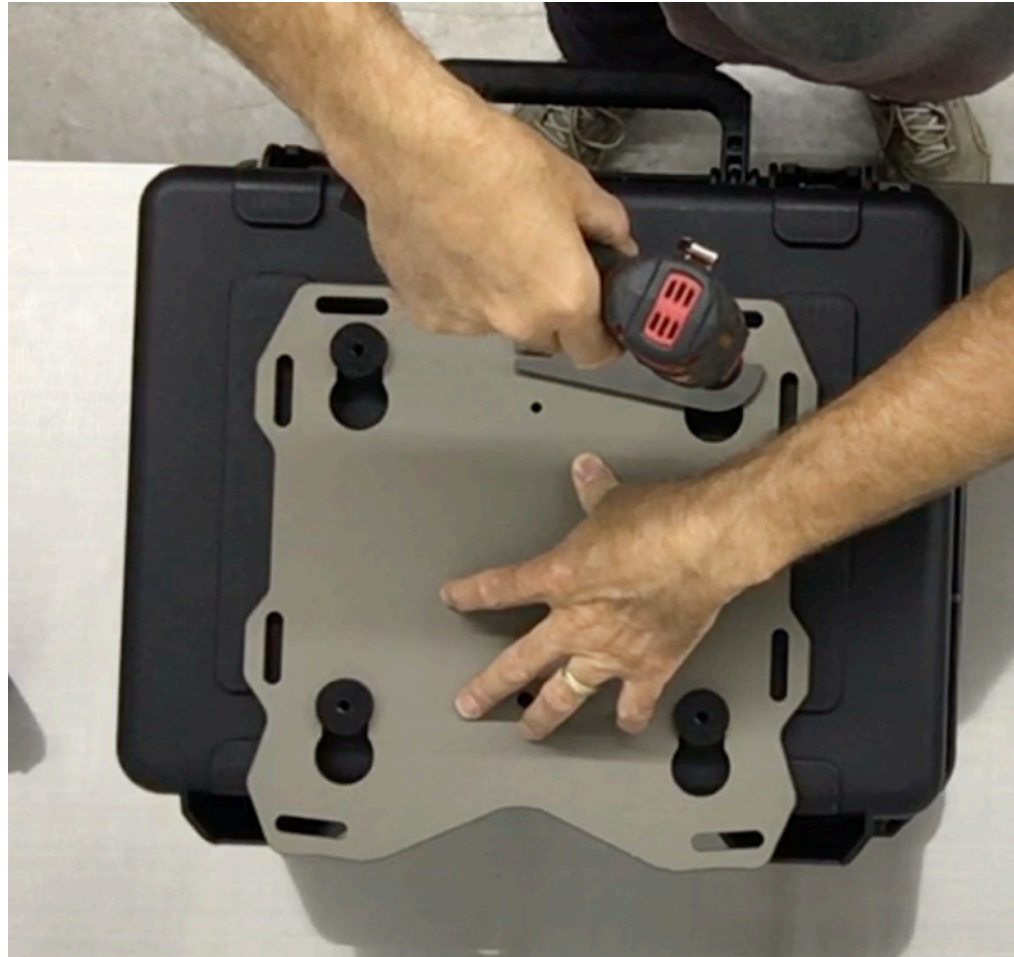
Step 10 Position the case on top of the pucks. Determine the for/aft location (side to side will be determined later). Position the box as far forward as possible without interfering with passenger comfort. Also consider if you will be placing any gear on the seat or if you want to be able to remove the seat with the box in place. Use a marker to mark the master puck location on the box.



Step 11 Place the case on a table or other work surface. Remove the 4 flat head screws and nuts holding the Slider plate onto the OEM rack. Place the Slider plate with the pucks installed on the case.



Step 12 Locate the puck marker on the case and align the master puck with the mark as it was on the bike. Adjust the box side to side and make any final adjustments to the location.



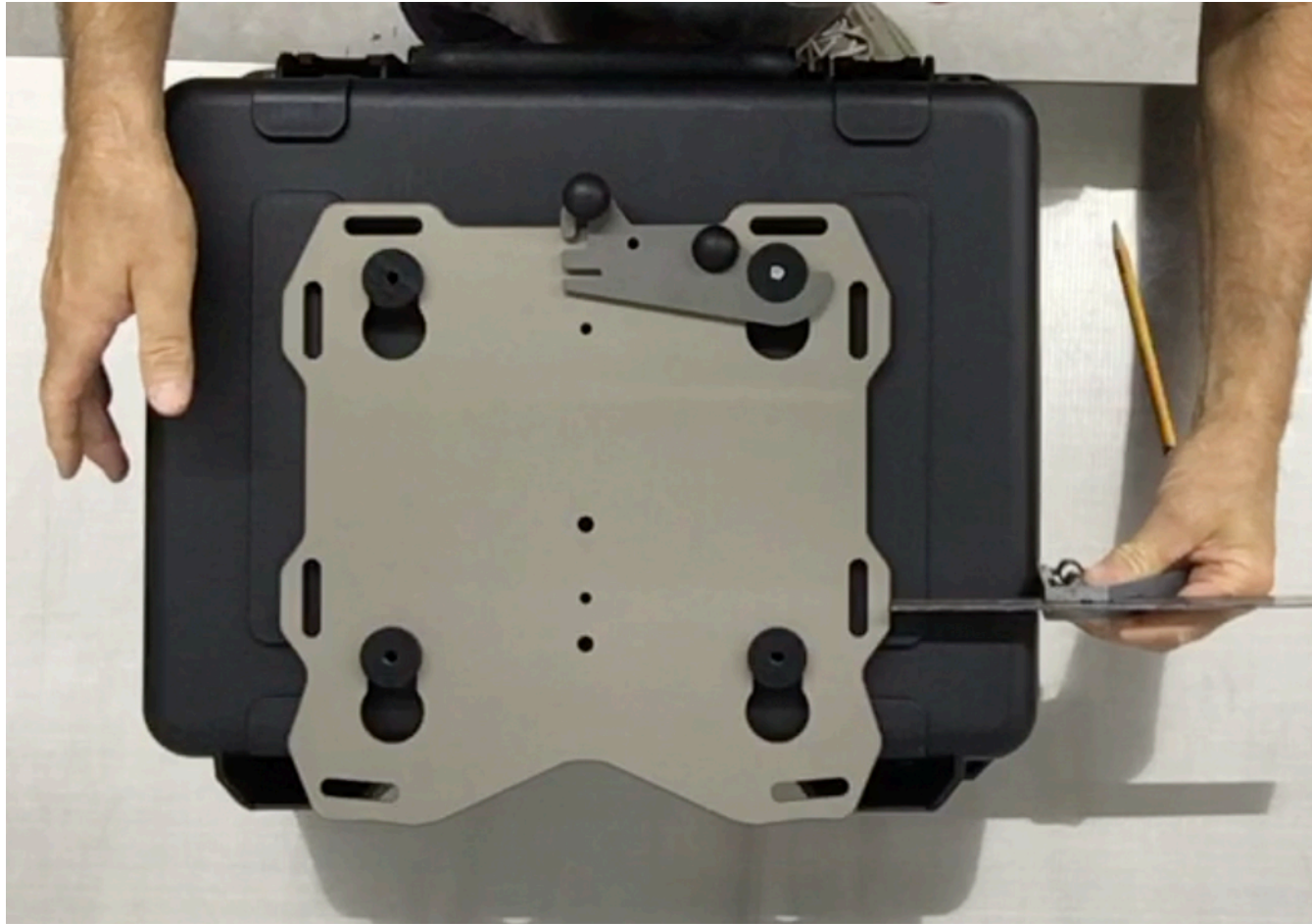
Step 13 With one hand apply downward force on the Slider plate, use your other hand to drill the case. With a ¼” drill bit and electric drill use the master puck as a drill guide and drill a pilot hole through the box.



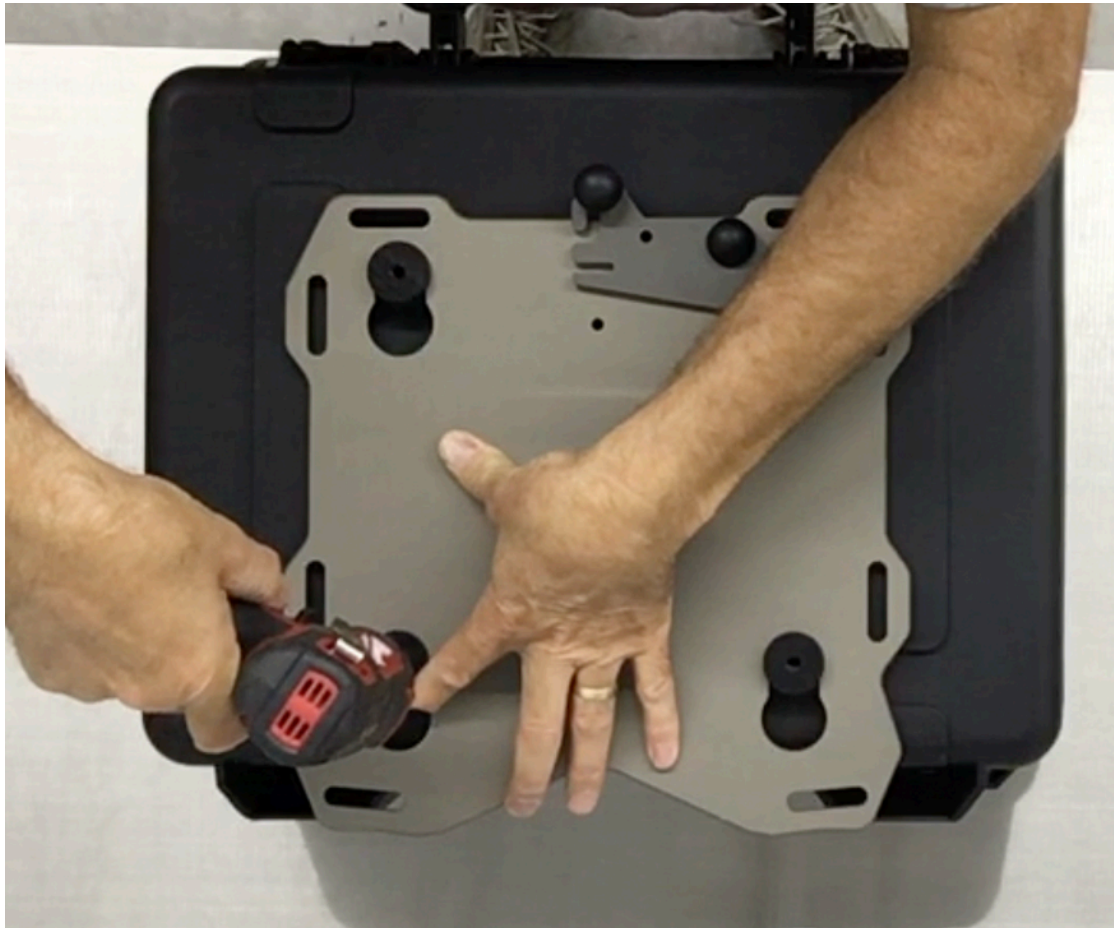
Step 14 Remove the Slider plate from the case. Use the 21/64" drill bit and electric drill to enlarge the 1/4" pilot hole.



Step 15 Use a M8 x 38 flat washer and the M8 button head cap screw to attach the master puck to the case.



Step 16 Place the Slider plate with the other 3 pucks onto the master puck and latch it into position. Square up the plate and box to each other (last chance).

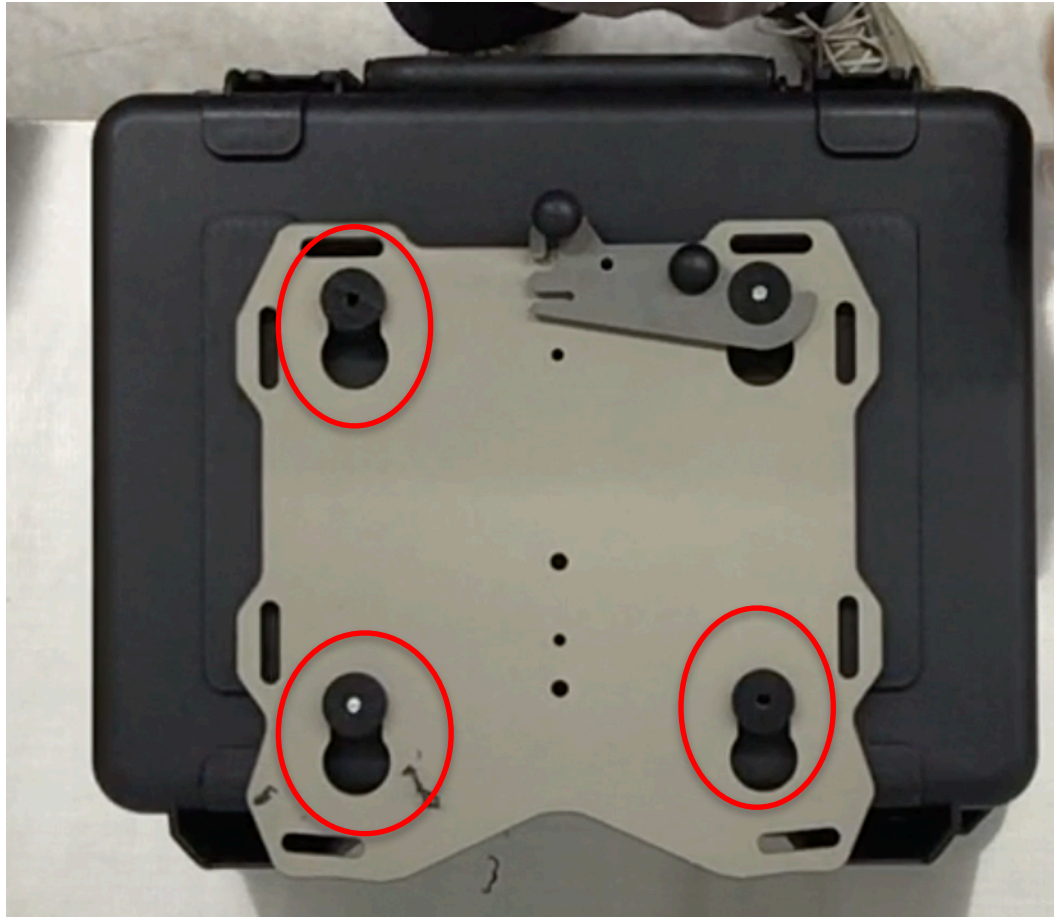


Step 17 With the ¼” drill bit, use the puck diagonally across from the master puck as a drill guide and drill a second pilot hole in the case.

Make sure the pucks are seated in the keyholes before drilling!!

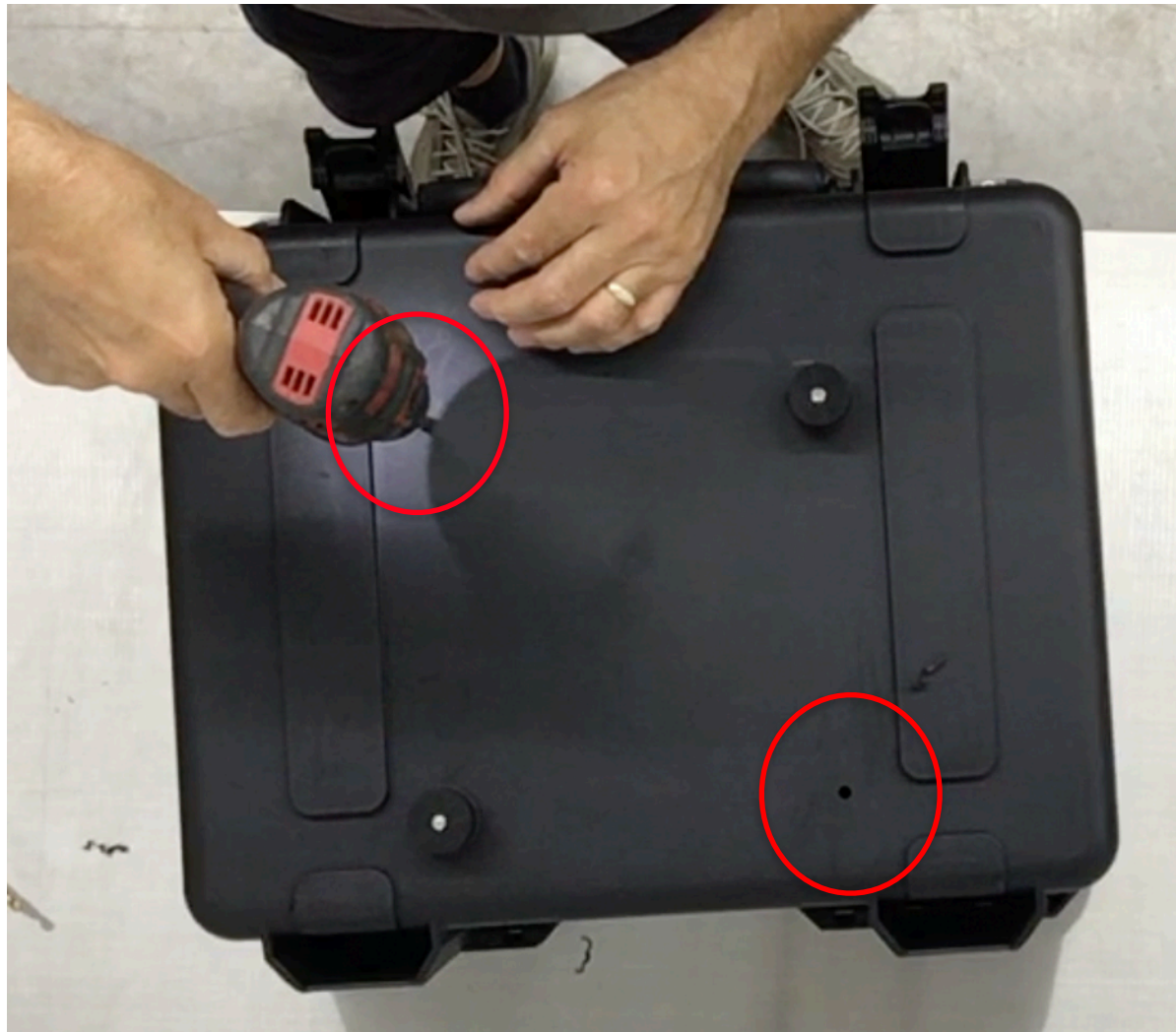


Step 18 Remove the slider plate from the case and use the 121/64” drill bit to enlarge the second 1/4” pilot hole.



Step 19 Attach the second puck to the case with the M8 hardware. Place the Slider rack on the case and latch it into position. With the 1/4" drill bit use the 2 remaining pucks as drill guides and drill the last two 1/4" holes.

Make sure the pucks are seated in the keyholes before drilling!!



Step 20 Remove the Slider rack and pucks from the case. Use the $21/64$ " drill bit and electric drill to enlarge the last $2\ 1/4$ " pilot holes.



Step 21 Install all pucks onto the case using the M8 flat washers and M8 button head cap screws. Lightly snug the puck screws at this time, later they will be fully tightened.



Step 22 Apply blue 242 Loctite or equivalent to the four M8 screws that hold the Slider plate to the OEM rack.



Step 23 Follow steps 3 - 6 and re-install the plate onto the OEM rack.



Step 24 Use a M6 hex wrench and torque wrench to torque the four M8 screws to 26 Nm (19ftlb).



Step 25 Install the case onto rack and latch it into place with the cam lever.



Step 26 Torque the puck screws to 9 ft.lb. or 12.2 Nm.



For security a 3/16" Master 130D pad lock can be used to lock the cam lever in the closed position. Ace Hardware Item#52730

That completes the installation process. Test ride the motorcycle and then check all the fasteners for tightness. Also check the fasteners again after 1000 miles and at every oil change after that.

Thank You

