



- **Back Road Equipment  
Slider Rear Rack  
Installation Instructions  
Honda Transalp 750**

**Tools Required:**

6 mm hex wrench

5 mm hex wrench

torque wrench

¼" drill bit

21/64" drill bit

electric hand drill

marking pen

13mm hex socket (fits torque wrench)

- **Kit Contents:**

- 1 Slider Plate with cam lever

- 4 - pucks

- 4 - M8 x 30 Button Head Screws

- 6 - 38 mm stainless steel washer

- 4 - M8 - 1.25 x 40 flat head screw

- 2 - 22 x 13 mm round aluminum spacers (long)

- 2 - 22 x 8 mm round aluminum spacer (short)

- 2 - 41 x 5 mm round aluminum spacer (very short)

- 4 - M8 nylock nuts

Do not exceed the OEMs  
recommendation for weight on the  
rear rack of the motorcycle!!

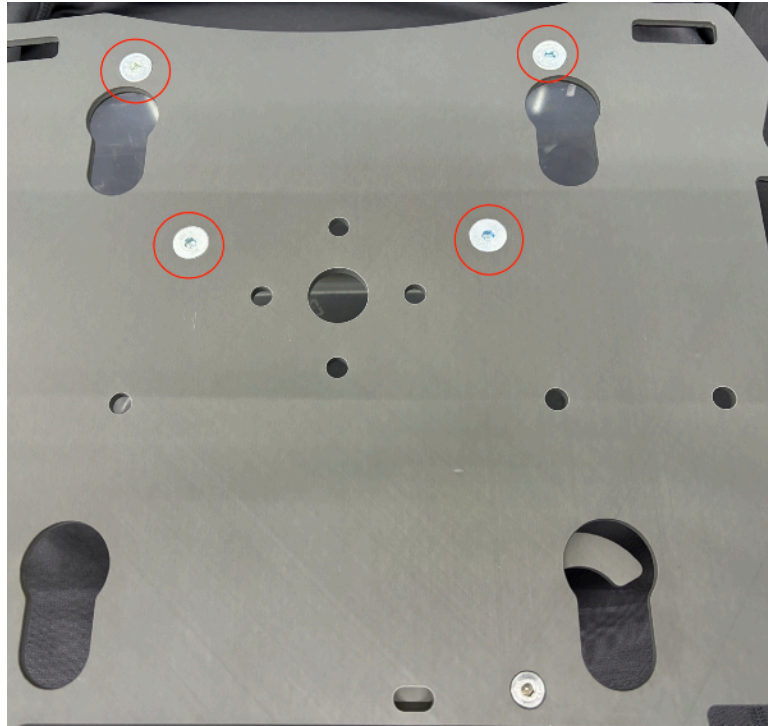
To properly locate the top box it will be necessary to install, remove and re-install the BRE Slider Plate, please keep this in mind and read through the instructions completely before starting the work.



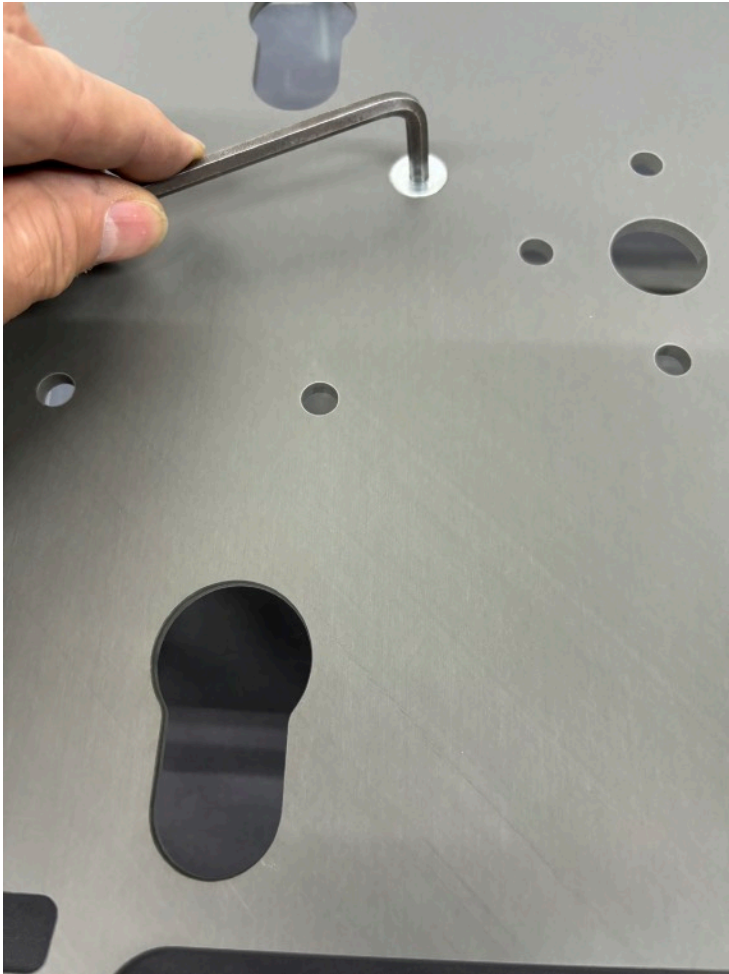
**Step 1** Install the 22 x 13 long aluminum spacers at the front of the OEM rack in the location shown.



**Step 2** Stack the 41 x 5 mm aluminum spacers on top of 22 x 8 mm aluminum spacers. Place a spacer stack over each of the rear holes as shown.



**Step 3** Place the Slider plate on top of the OEM rack and insert the the four M8 flat head screws through the plate and the spacers.

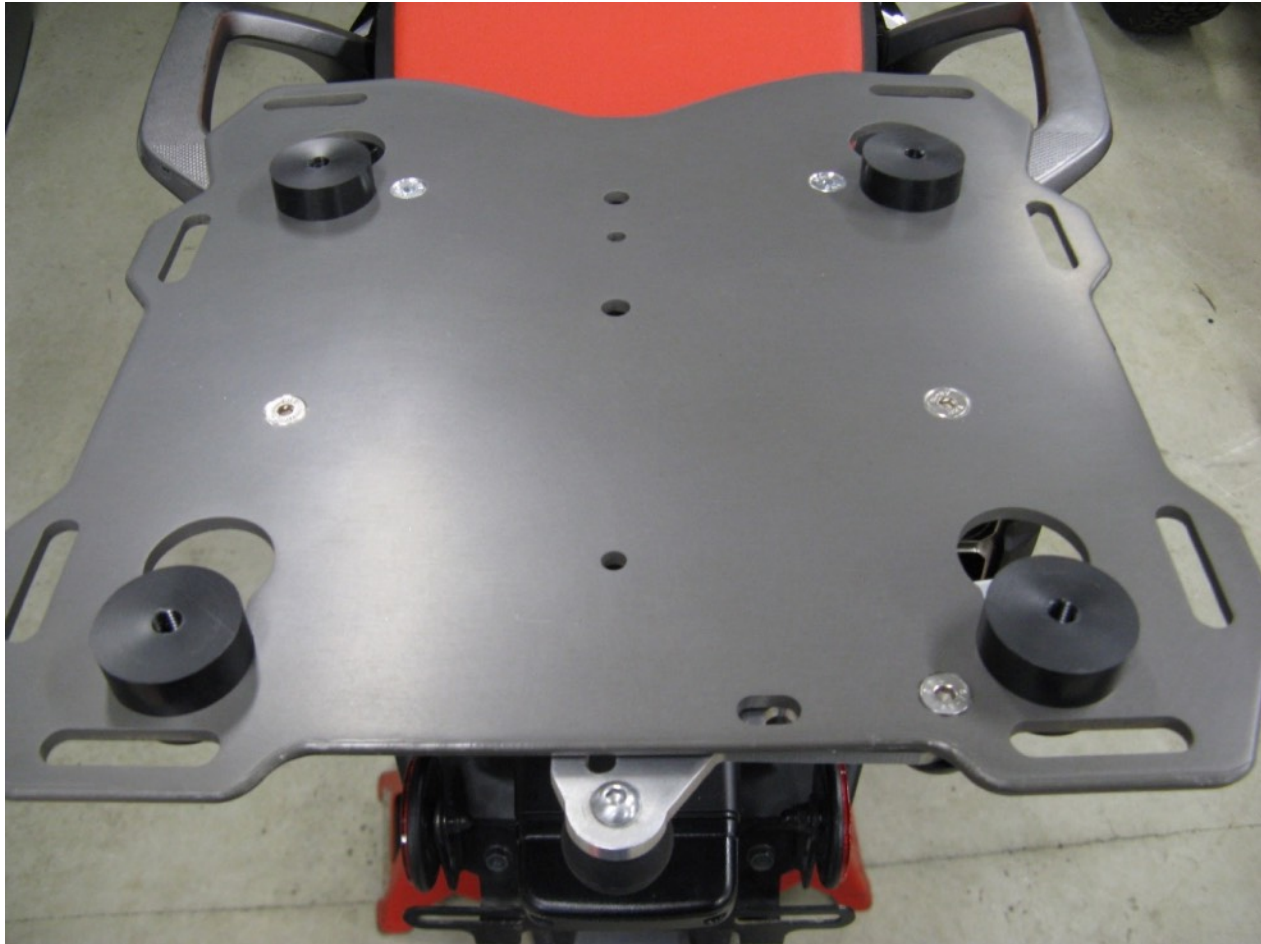


**Step 4** Thread an M8 lock nut onto each of the M8 flat head screws. Use a M6 hex wrench to hold the flat head screws and use a torque wrench to torque the lock nuts to 26 Nm (19ftlb).



**Step 10** Install one of the black plastic pucks into the key hole with the cam lever. Lock the puck into place with the cam lever. This will be referred to as the “Master Puck”

Note: Remove the large washer and screw from the puck before putting into the plate. The screws and washers are installed into the pucks for shipment as part of our QA process.

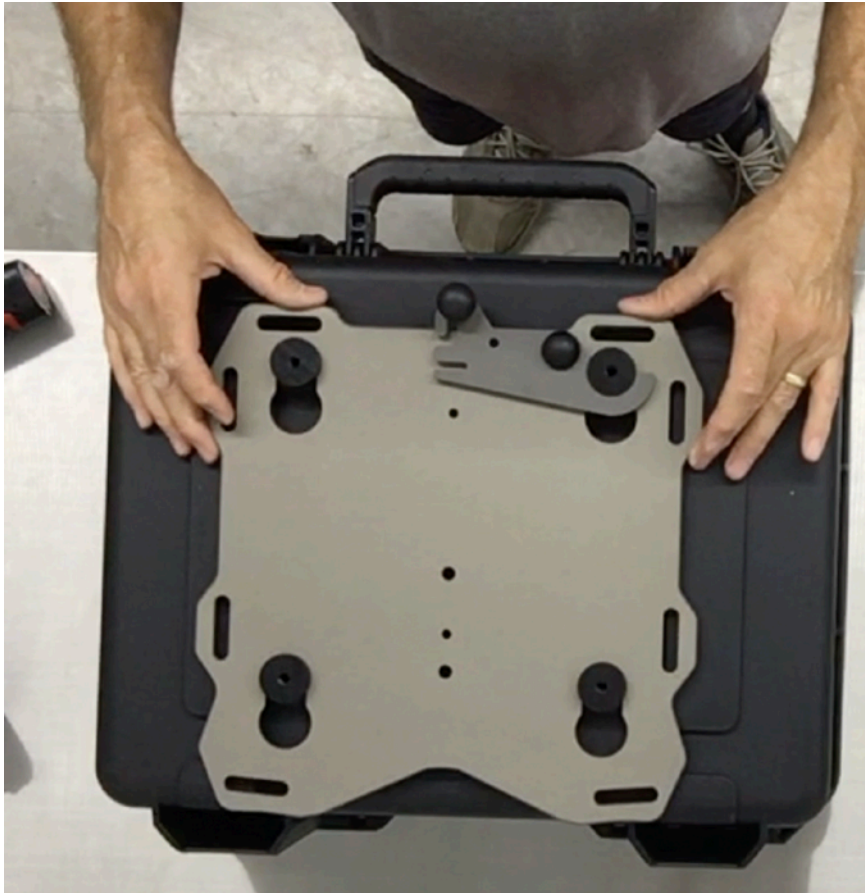


**Step 11** Insert the 3 remaining pucks into the keyholes in the plate.

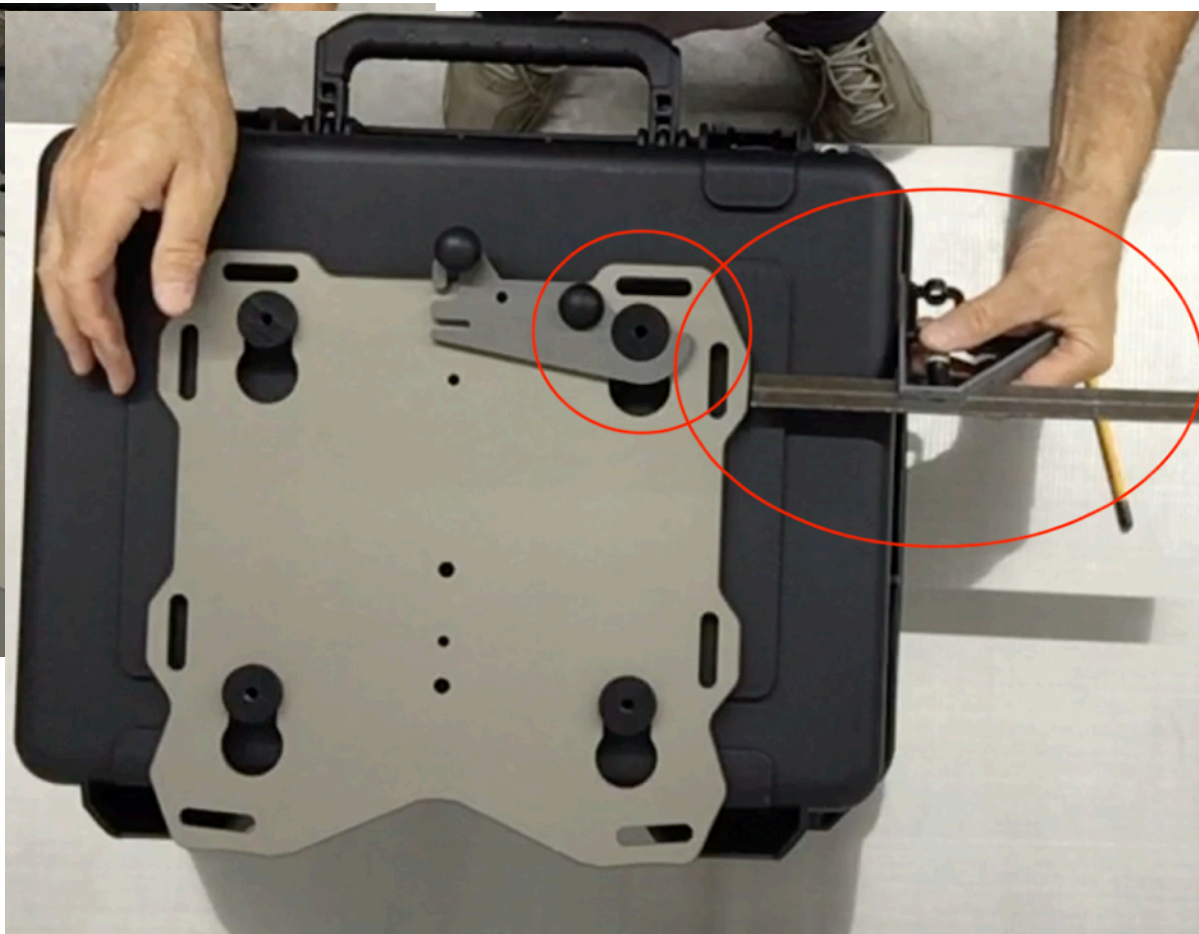
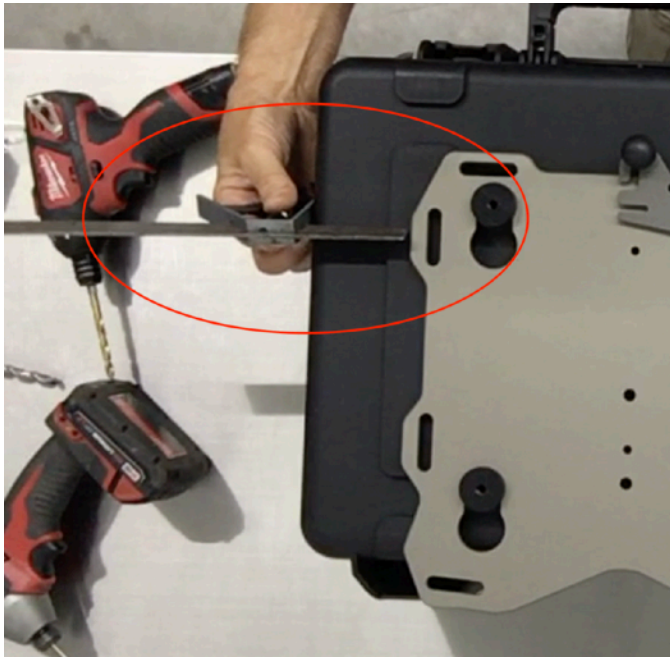




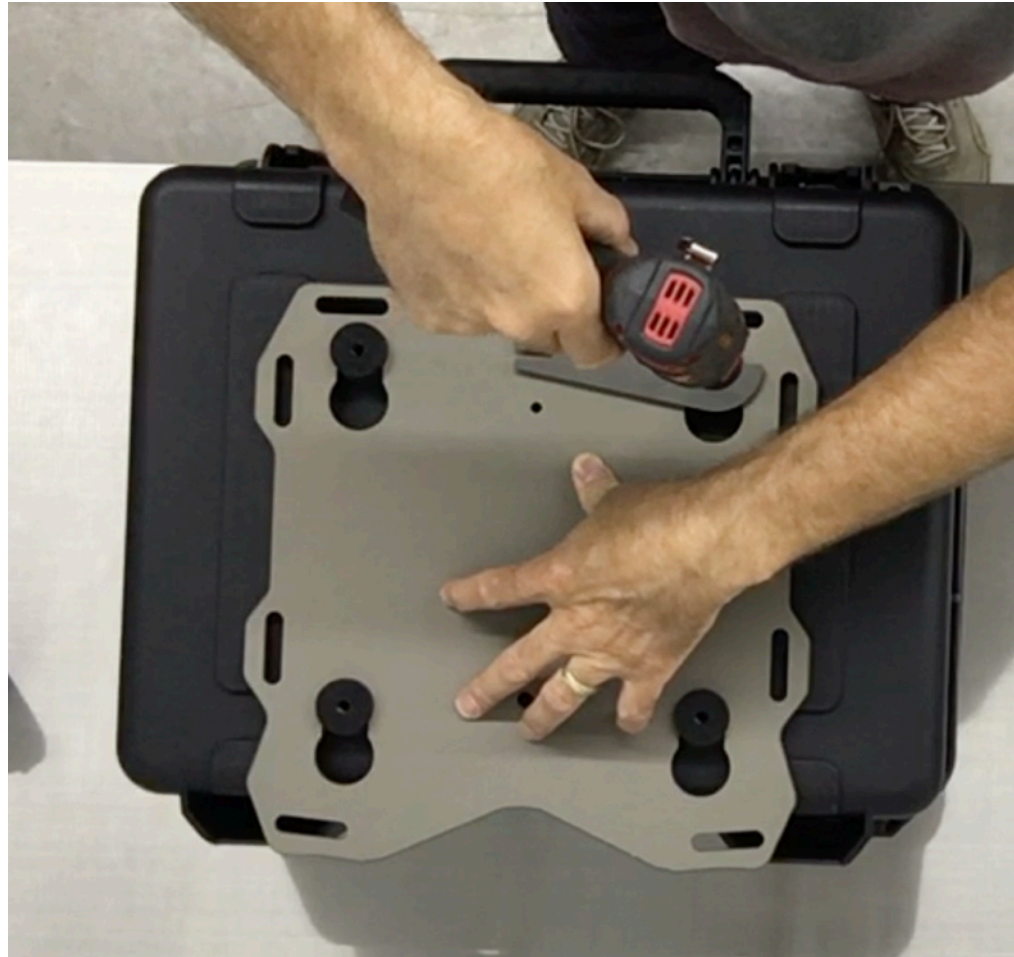
**Step 12** Position the case on top of the pucks. Determine the for/aft location (side to side will be determined later). Position the box as far forward as possible without interfering with passenger comfort. Also consider if you will be placing any gear on the seat or if you want to be able to remove the seat with the box in place. Use a marker to mark the master puck location on the box.



**Step 13** Place the case on a table or other work surface. Remove the 4 flat head screws and nuts holding the Slider plate onto the OEM rack. Place the Slider plate with the pucks installed on the case.



**Step 14** Locate the puck marker on the case and align the master puck with the mark as it was on the bike. Adjust the box side to side and make any final adjustments to the location.



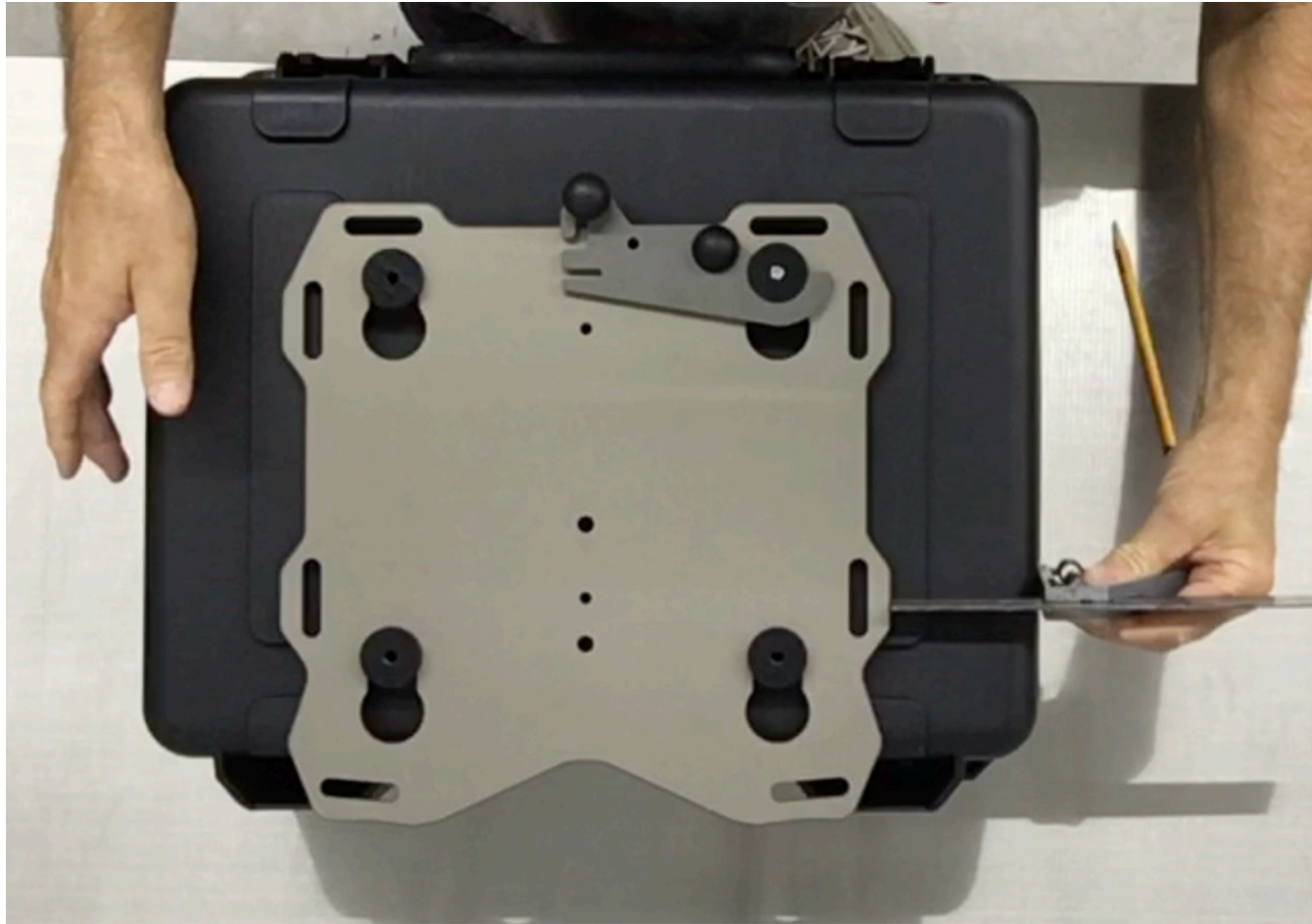
**Step 15** With one hand apply downward force on the Slider plate, use your other hand to drill the case. With a ¼” drill bit and electric drill use the master puck as a drill guide and drill a pilot hole through the box.



**Step 16** Remove the Slider plate from the case. Use the 21/64" drill bit and electric drill to enlarge the 1/4" pilot hole.



**Step 17** Use a M8 x 38 flat washer and the M8 button head cap screw to attach the master puck to the case.



**Step 18** Place the Slider plate with the other 3 pucks onto the master puck and latch it into position. Square up the plate and box to each other (last chance).



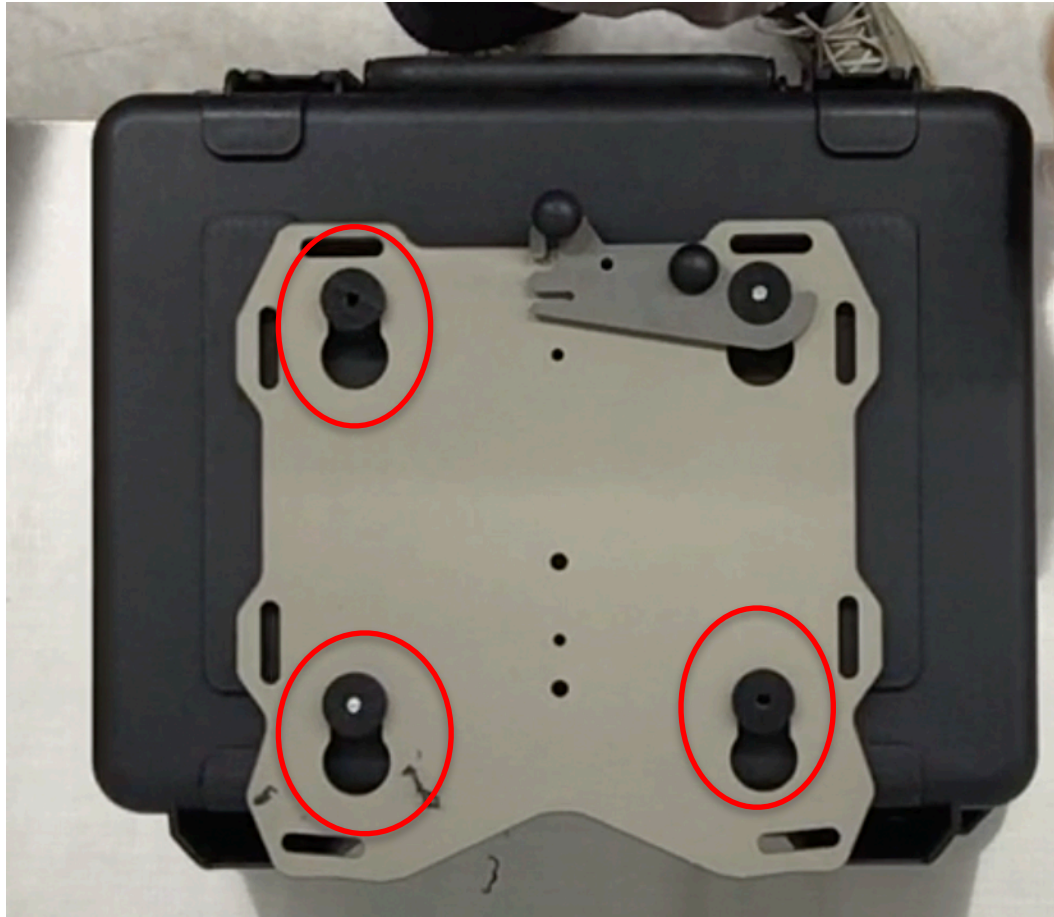
**Step 19** With the ¼” drill bit, use the puck diagonally across from the master puck as a drill guide and drill a second pilot hole in the case.

**Make sure the pucks are seated in the keyholes before drilling!!**



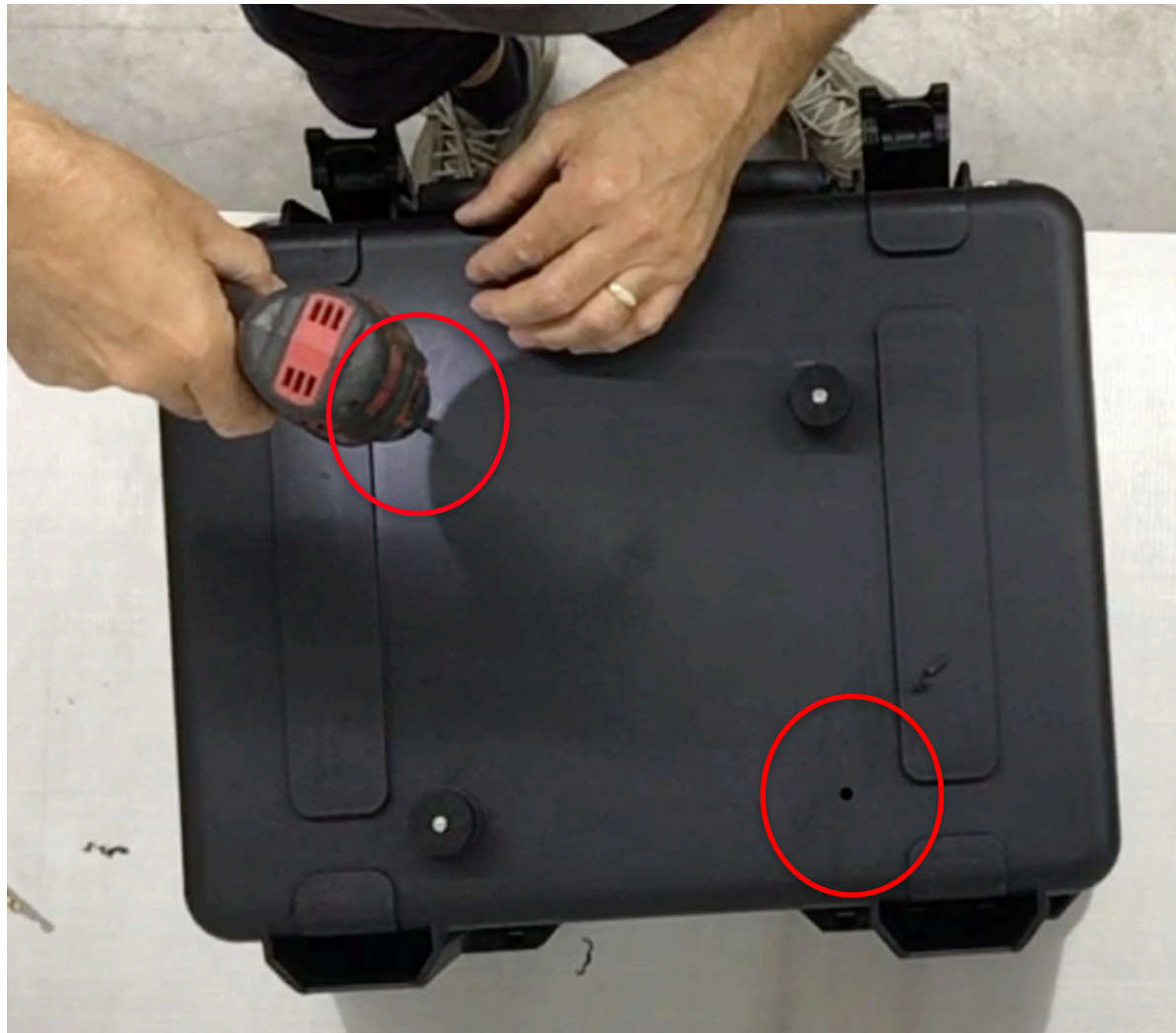


**Step 20** Remove the slider plate from the case and use the 121/64” drill bit to enlarge the second 1/4” pilot hole.



**Step 21** Attach the second puck to the case with the M8 hardware. Place the Slider rack on the case and latch it into position. With the 1/4" drill bit use the 2 remaining pucks as drill guides and drill the last two 1/4" holes.

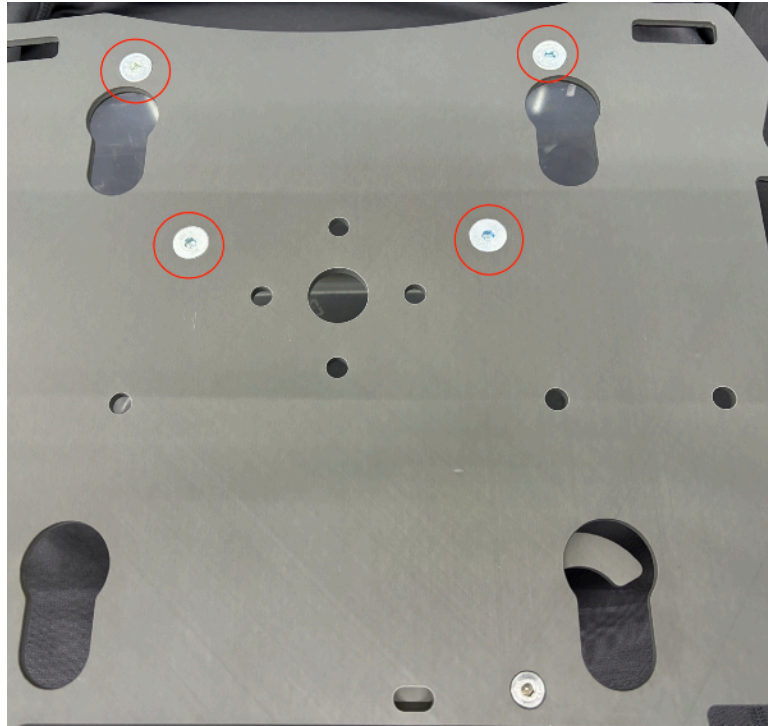
**Make sure the pucks are seated in the keyholes before drilling!!**



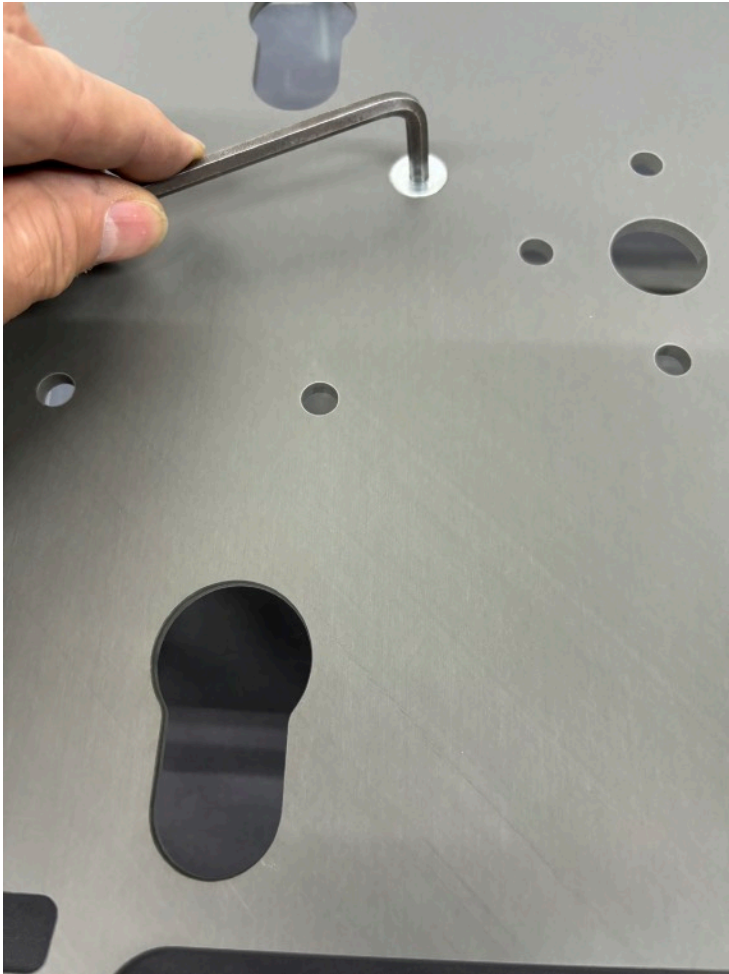
**Step 22** Remove the Slider rack and pucks from the case. Use the 21/64" drill bit and electric drill to enlarge the last 2 1/4" pilot holes.



**Step 23** Install all pucks onto the case using the M8 flat washers and M8 button head cap screws. Lightly snug the puck screws at this time, later they will be fully tightened.



**Step 24** Re-install the plate onto the bike using the M8 flat head screws and lock nuts.



**Step 25** Thread an M8 lock nut onto each of the M8 flat head screws. Use a M6 hex wrench to hold the flat head screws and use a torque wrench to torque the lock nuts to 26 Nm (19ftlb).



**Step 26** Install the case onto rack and latch it into place with the cam lever.



**Step 27** Torque the puck screws to 9 ft.lb. or 12.2 Nm.





For security a 3/16" Master 130D pad lock can be used to lock the cam lever in the closed position. Ace Hardware Item#52730

That completes the installation process. Test ride the motorcycle and then check all the fasteners for tightness. Also check the fasteners again after 1000 miles and at every oil change after that.

# Thank You

