



• Back Road Equipment Slider Rear Rack Installation Instructions Aprillia Tuareg 660

Tools Required:

T40 driver

4 mm hex bit

5 mm hex bit

6 mm hex bit

10 mm open end wrench

¼" drill bit

21/64" drill bit

electric hand drill

marking pen

Combination square or ruler

Torque wrench (must fit hex bits)

• Kit Contents:

• 1 Slider Plate with cam lever

• 2 - mounting tubes

• 1 - rear bracket

• 4 - pucks

• 4 - 8mm Button Head Screws

• 4 - 1.5" diameter washer

• 6 - M6 x 18 flat head screws

• 2 - M8 x 35 SHCS head screws

• 6 - M6 nylock flange nuts

• 1 - 25 mm OD x 6 mm long stepped aluminum spacer

• 1 - M8 x 20 flange head cap screw

go to backroadequipment.com for installation instructions

**Do not exceed the OEMs
recommendation for weight on the
rear rack of the motorcycle!!**

To properly locate the top box it will be necessary to install, remove and re-install the BRE Slider Plate, please keep this in mind and read through the instructions completely before starting the work.



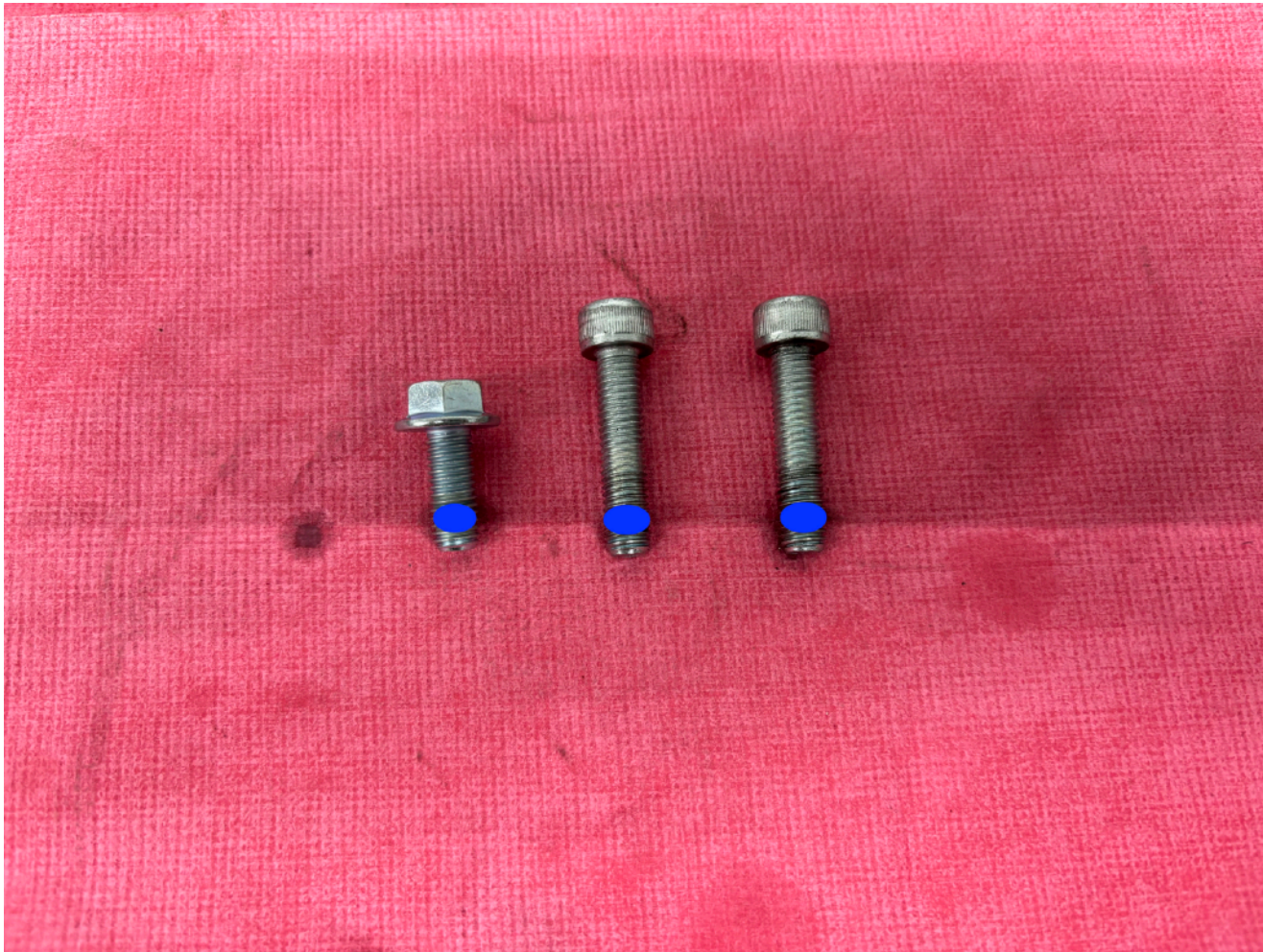
Step 1 On the rear of the bike remove the single M8 screw using a 6mm hex tool. This screw will **not** be used with the BRE Slider rack.



Step 2 Remove the RH & LH OEM M8 screws. These screws will **not** be used with the BRE Slider rack.



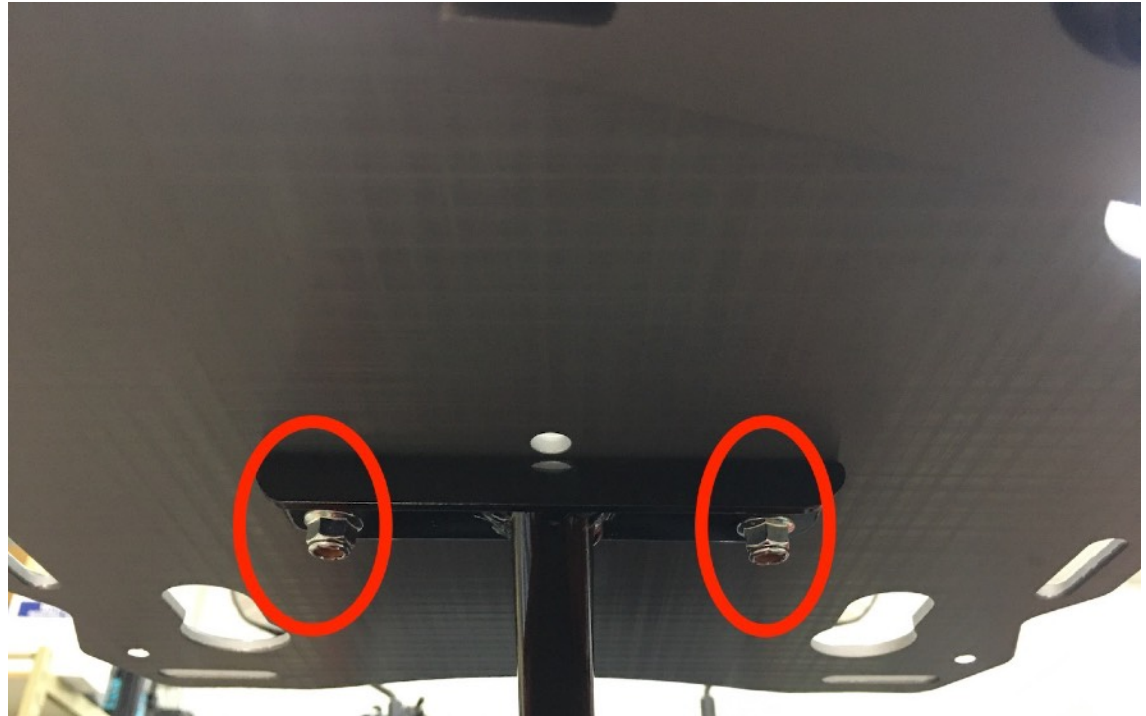
Step 3 Insert stepped aluminum spacer with small diameter facing downward.



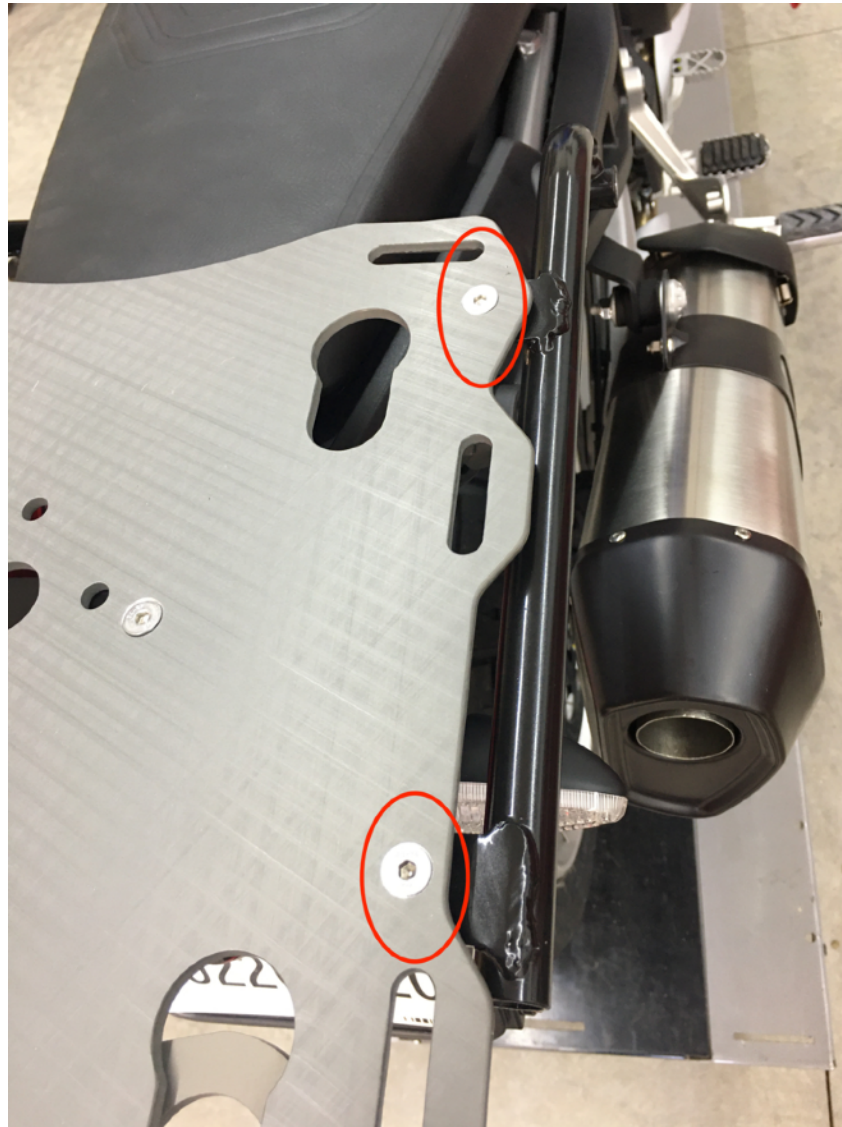
Step 4 Apply Blue 242 Loctite or equivalent to the threads of the M8 x 25 flange head cap screw and the two M8 X 35 socket head cap screws (SHCS).



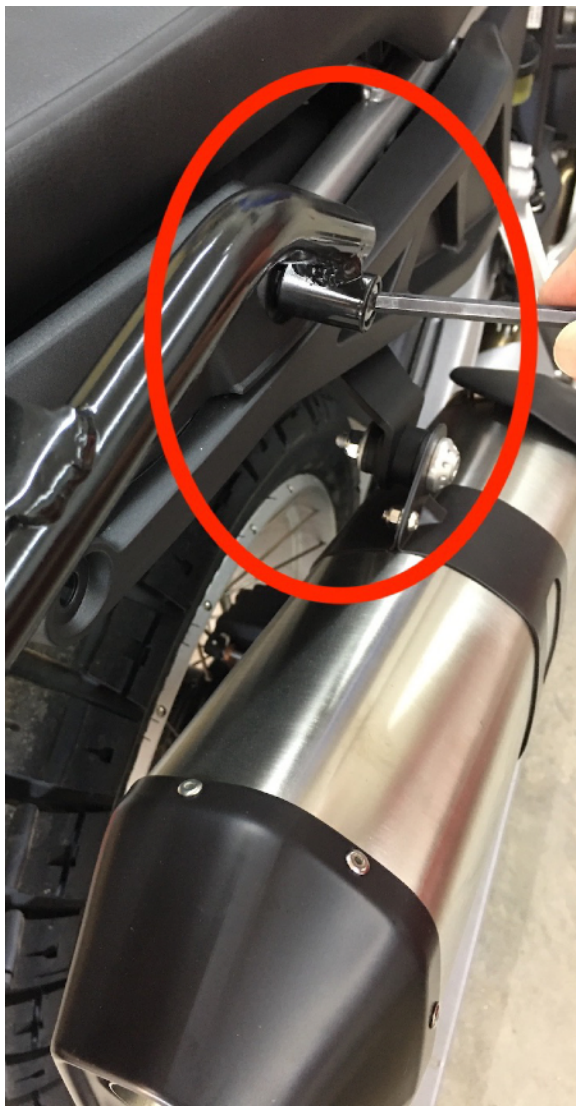
Step 5 Using the M8 x 20 flange head cap screw attach the rear bracket. Square the bracket to the bike. Tighten and torque the cap screw to 20 ft. lb.



Step 6 Attach the slider plate to the rear bracket using two M6 x 18 flat head screws and M6 lock nuts. Do not tighten nuts at this time.



Step 7 Attach the rear of the mounting tube to the Slider plate with two M6 x 18 flat head screws and M6 lock nuts. Hand tighten the screws at this time.



Step 8 Attach the front of the RH mounting tube with a M8 x 35 SHCS. Do not tighten at this time, turn the screw 3 to 4 revolutions. **Note:** make certain the small diameter on the boss passes through the the hole in the OEM plastic



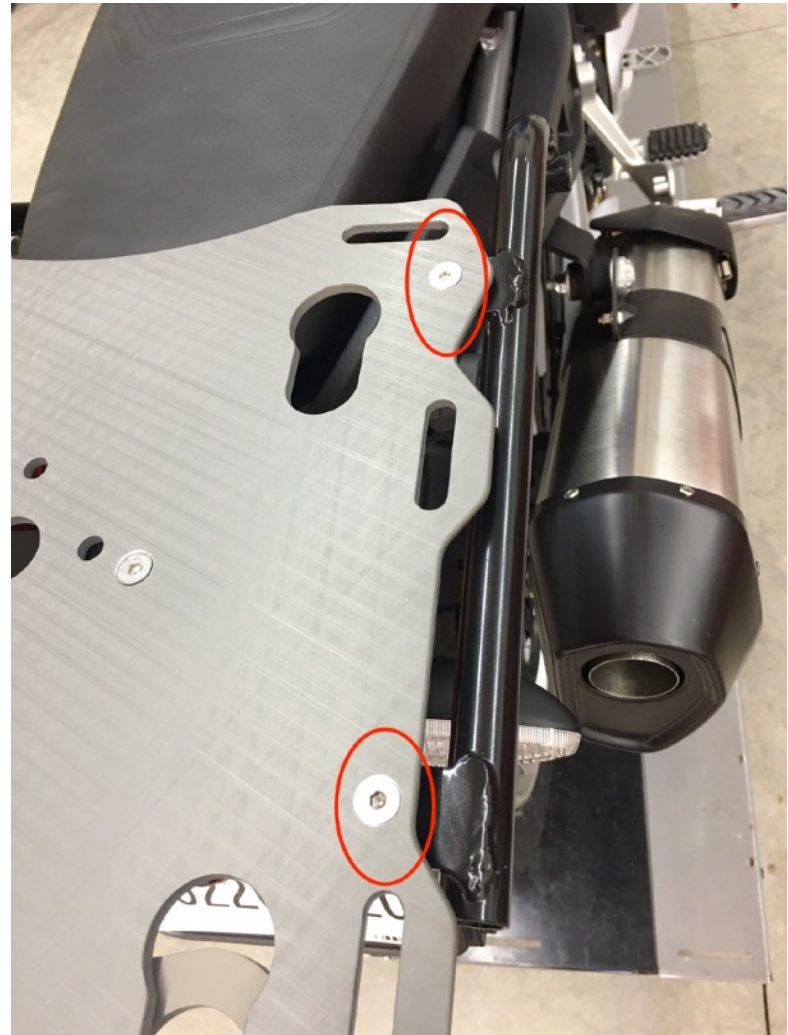
Step 9 Attach the rear of the LH mounting tube to the Slider plate with two M6 x 18 flat head screws and M6 lock nuts. Hand tighten the screws at this time.



Step 10 Attach the front of the LH mounting tube with a M8 x 35 SHCS. Do not tighten at this time, turn the screw 3 to 4 revolutions. **Note:** make certain the small diameter on the boss passes through the hole in the OEM plastic



Step 11 Torque the 2 center M6 x 18 flat head screws to 9 ft. lbs.



Step 12 Torque the four tube M6 lock nuts to 9 ft lbs.



Step 13 Torque the M8 SHCS to 20 ft lbs on the RH and LH tube mounts



Step 14 Install one of the black plastic pucks into the key hole with the cam lever. Lock the puck into place with the cam lever. This will be referred to as the “Master Puck”

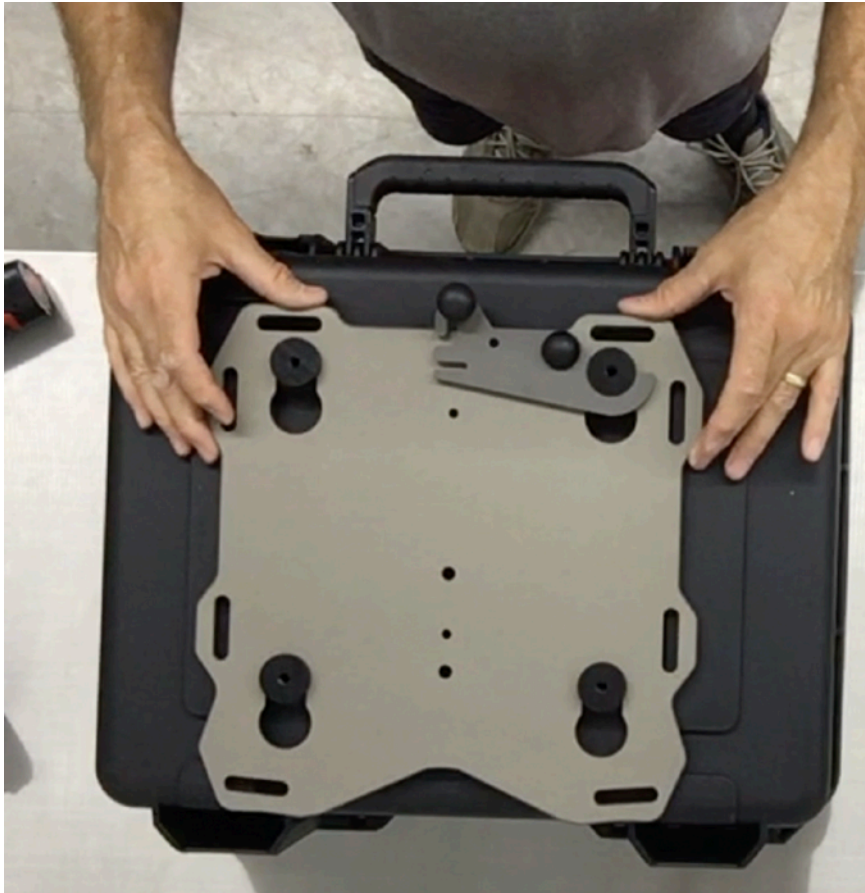
Note: Remove the large washer and screw from the puck before putting into the plate. The screws and washers are installed into the pucks for shipment as part of our QA process.



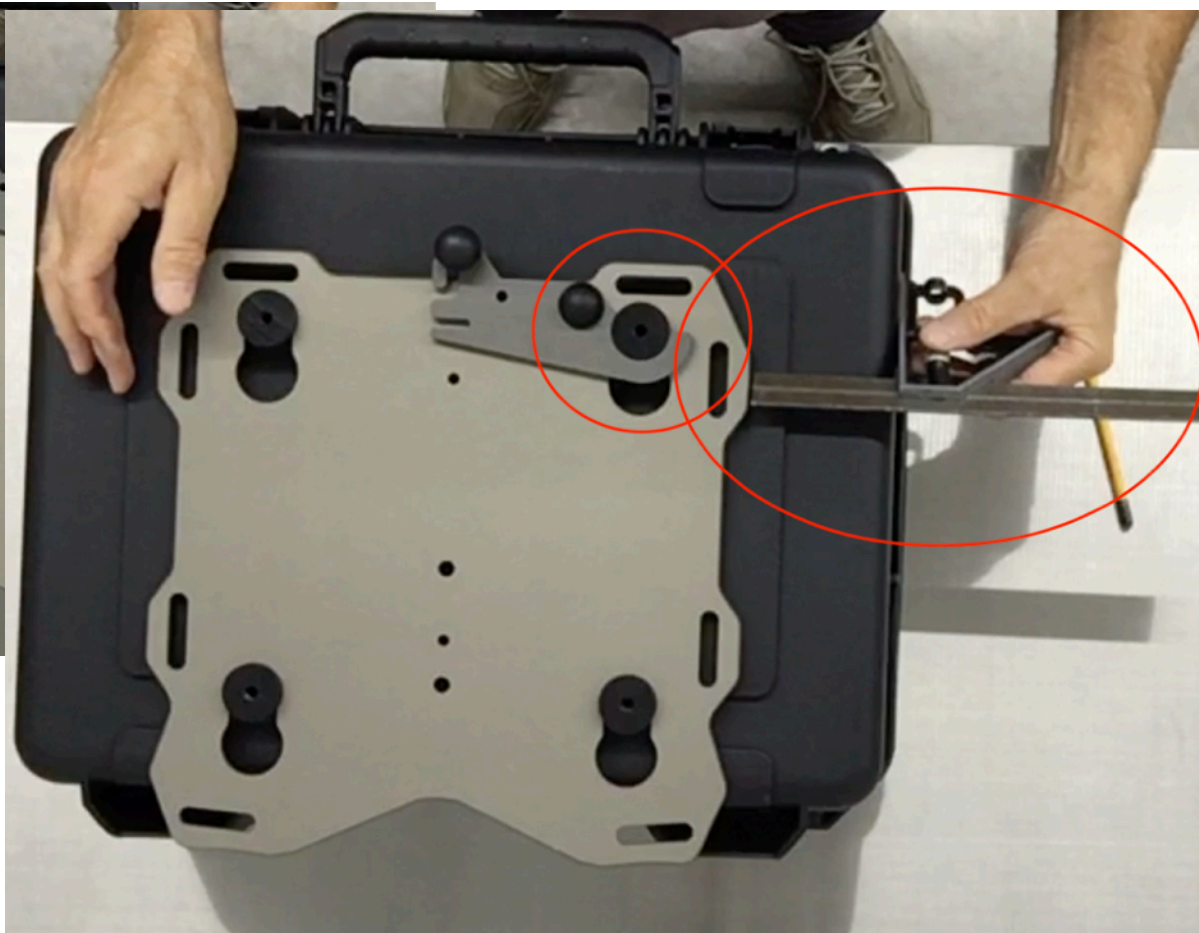
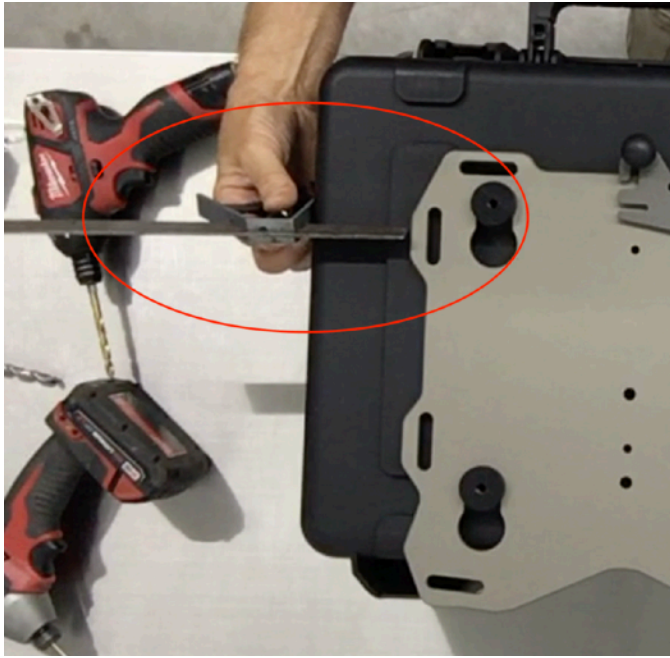
Step 15 Insert the 3 remaining pucks into the keyholes in the plate.



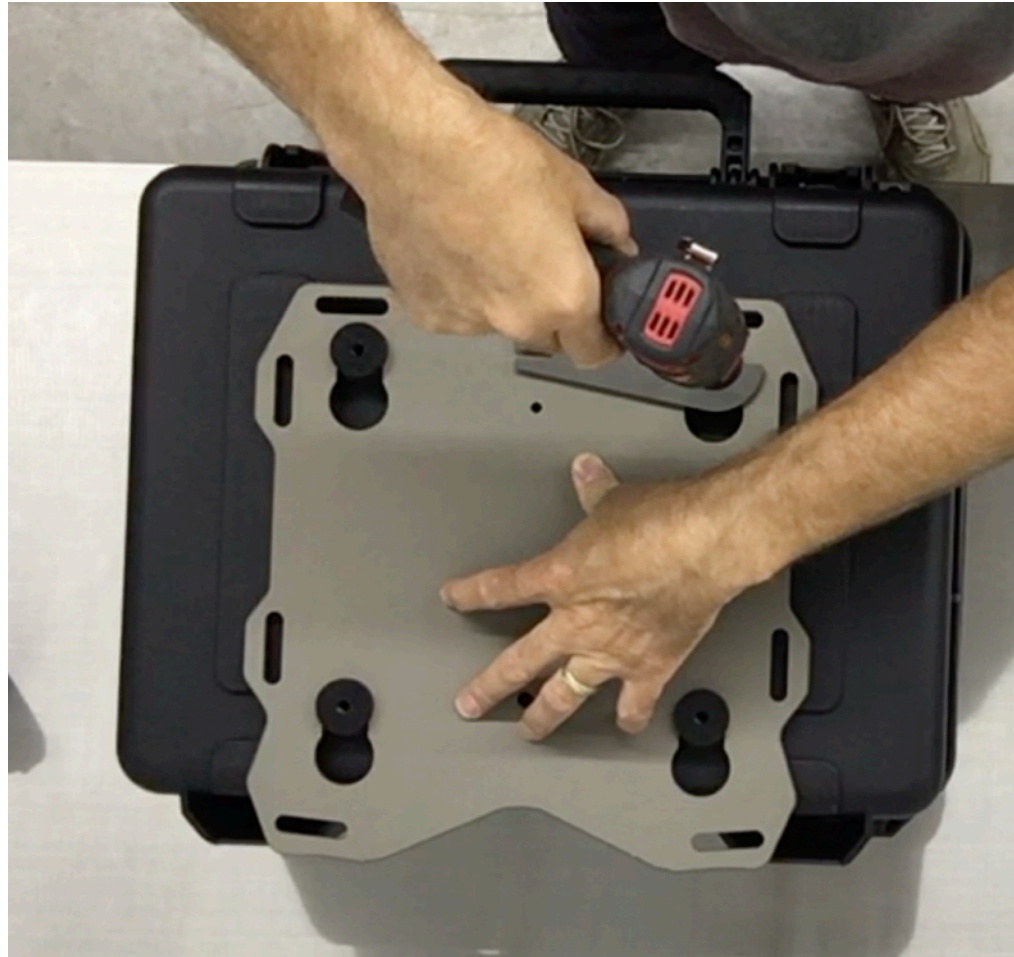
Step 16 Position the case on top of the pucks. Determine the for/aft location (side to side will be determined later). Position the box as far forward as possible without interfering with passenger comfort. Also consider if you will be placing any gear on the seat or if you want to be able to remove the seat with the box in place. Use a marker to mark the master puck location on the box.



Step 17 Place the case on a table or other work surface. If the plate is still attached to the motorcycle loosen the RH & LH M8 socket head cap screws. Remove the 6 flat head screws and nuts holding the Slider plate onto the mounting tubes. Place the Slider plate with the pucks installed on the case.



Step 18 Locate the puck marker on the case and align the master puck with the mark as it was on the bike. Adjust the box side to side and make any final adjustments to the location.



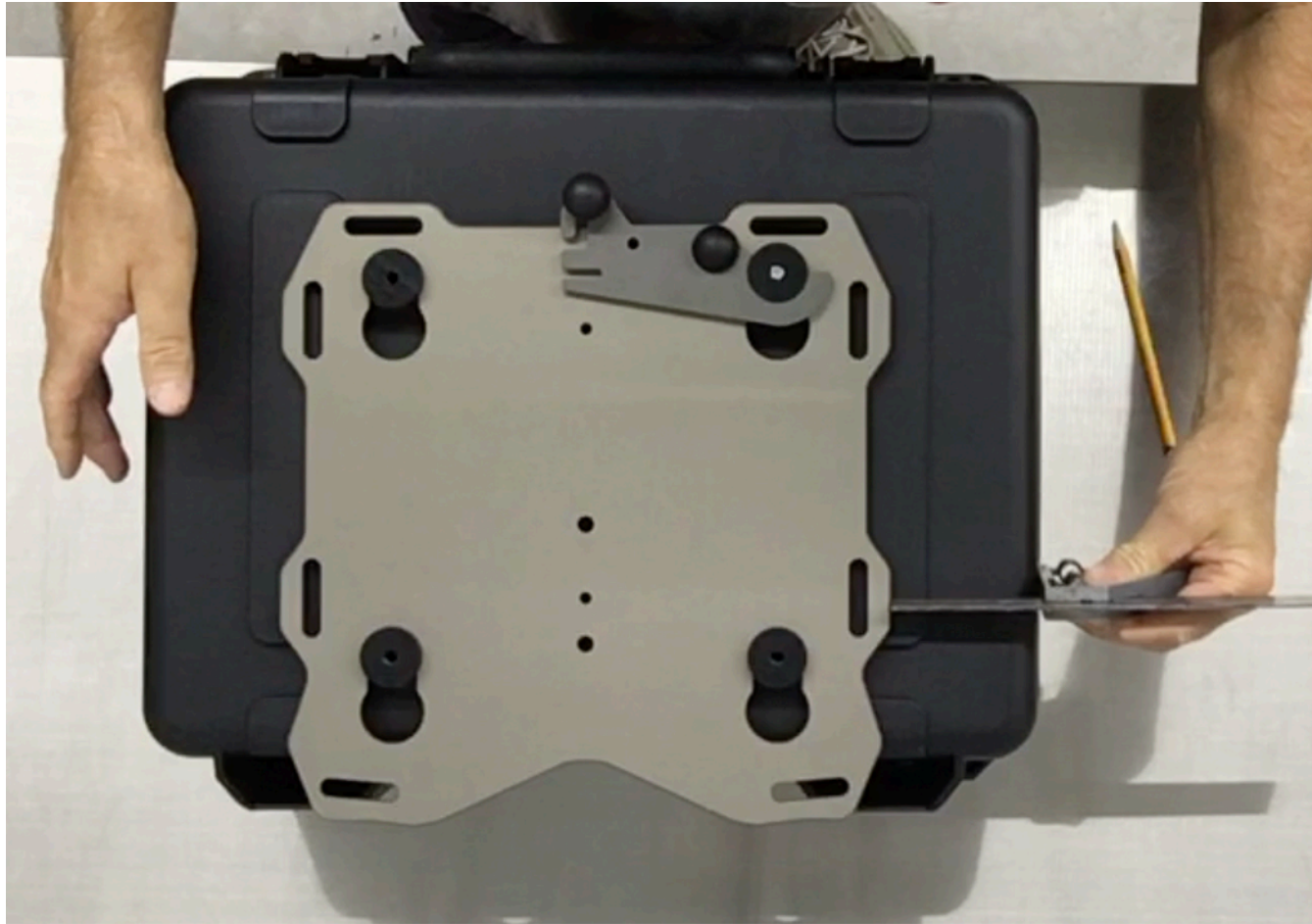
Step 19 With one hand apply downward force on the Slider plate, use your other hand to drill the case. With a ¼” drill bit and electric drill use the master puck as a drill guide and drill a pilot hole through the box.



Step 20 Remove the Slider plate from the case. Use the 21/64" drill bit and electric drill to enlarge the 1/4" pilot hole.



Step 21 Use a M8 x 38 flat washer and the M8 button head cap screw to attach the master puck to the case.



Step 22 Place the Slider plate with the other 3 pucks onto the master puck and latch it into position. Square up the plate and box to each other (last chance).

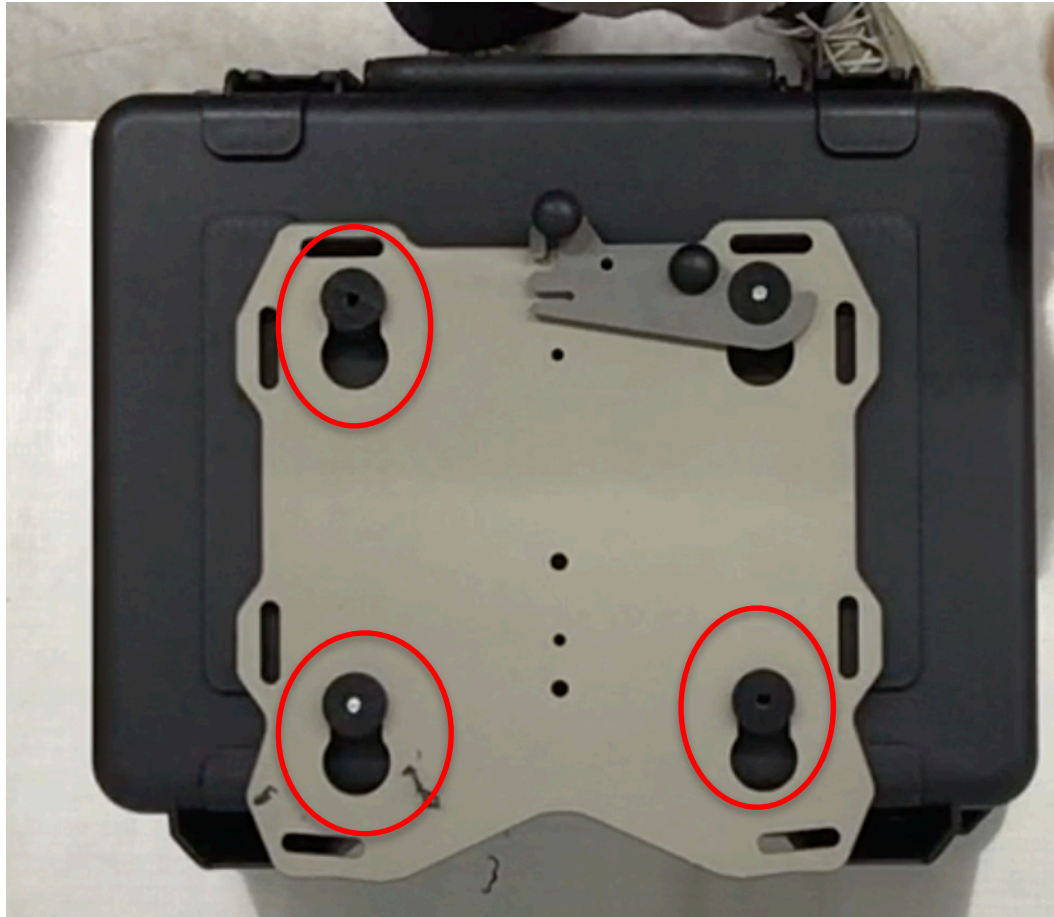


Step 23 With the ¼” drill bit, use the puck diagonally across from the master puck as a drill guide and drill a second pilot hole in the case.

Make sure the pucks are seated in the keyholes before drilling!!

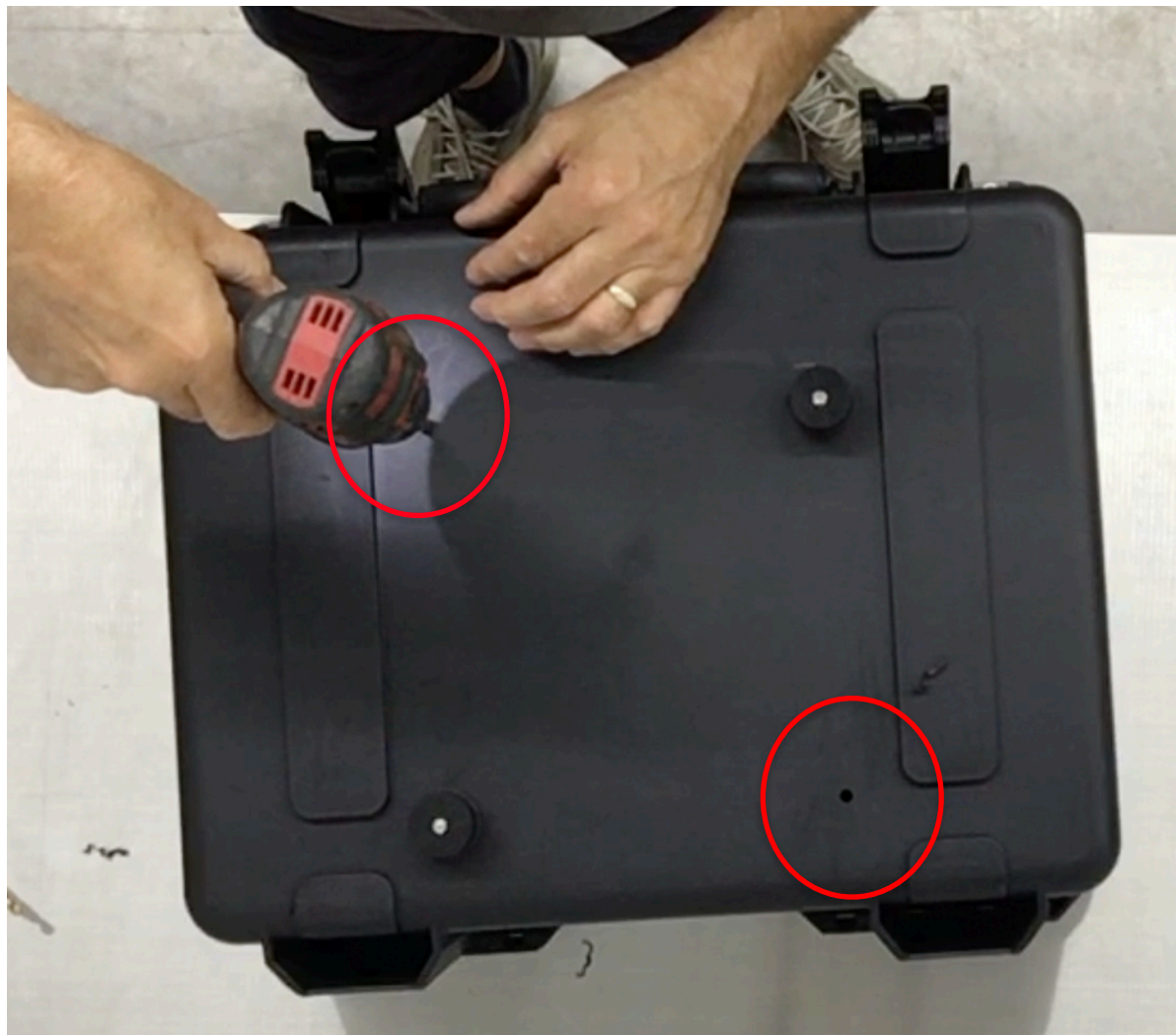


Step 24 Remove the slider plate from the case and use the 121/64” drill bit to enlarge the second 1/4” pilot hole.



Step 25 Attach the second puck to the case with the M8 hardware. Place the Slider rack on the case and latch it into position. With the 1/4" drill bit use the 2 remaining pucks as drill guides and drill the last two 1/4" holes.

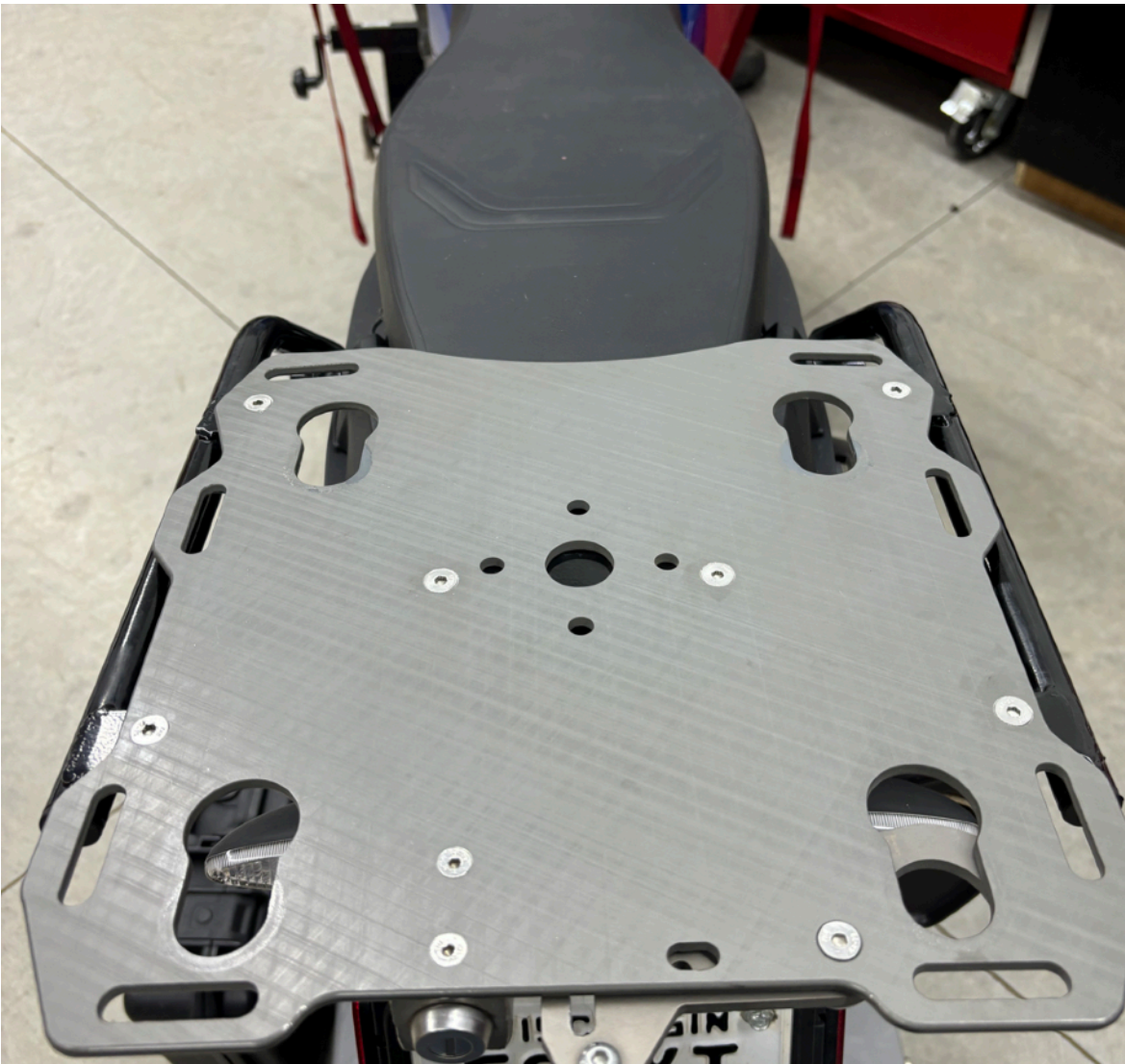
Make sure the pucks are seated in the keyholes before drilling!!



Step 26 Remove the Slider rack and pucks from the case. Use the $21/64$ " drill bit and electric drill to enlarge the last $2\ 1/4$ " pilot holes.



Step 27 Install all pucks onto the case using the M8 flat washers and M8 button head cap screws. Lightly snug the puck screws at this time, later they will be fully tightened.



Step 28 Re-install the plate onto the bike following steps 6 through 13.



Step 29 Install the case onto rack and latch it into place with the cam lever.



Step 30 Torque the puck screws to 9 ft.lb. or 12.2 Nm.



For security a 3/16" Master 130D pad lock can be used to lock the cam lever in the closed position. Ace Hardware Item#52730

That completes the installation process. Test ride the motorcycle and then check all the fasteners for tightness. Also check the fasteners again after 1000 miles and at every oil change after that.

Thank You

